

From samples to results On time and error free

Sample Scheduler for OpenLab

Run your chromatography lab using one easy-to-use application that integrates with your LIMS to automate common error-prone and time-consuming tasks.

- Automate sample worklist creation for faster, effective lab operations.
- Ensure that results contain no transcription mistakes for reliable results attribution in LIMS.
- Achieve greater accuracy with optional supervisor review using the Review & Submit function.
- Reduce compliance risks with technical controls that increase data integrity.

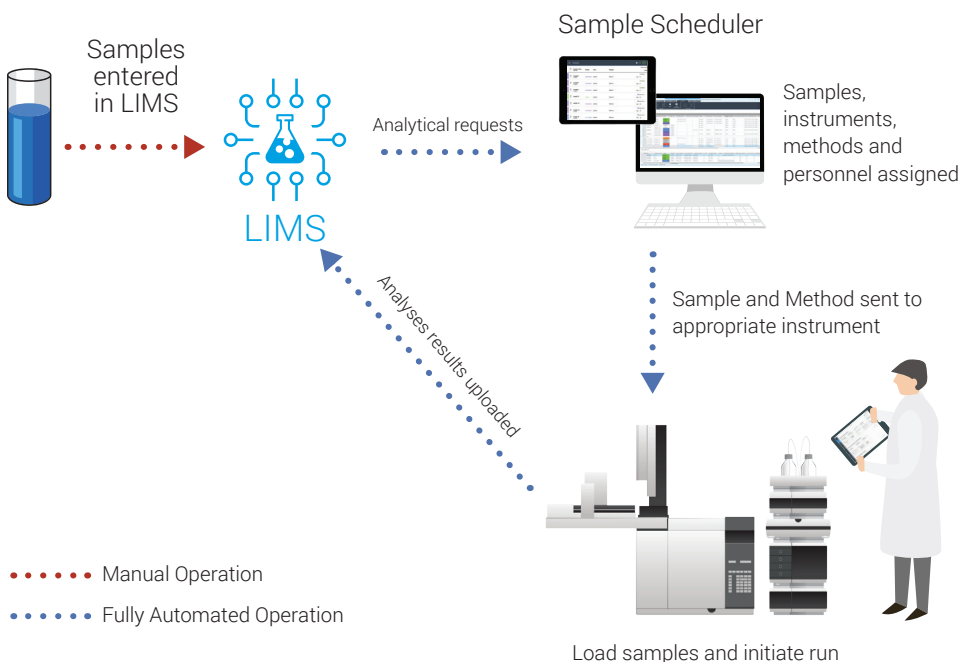
Agilent
OpenLab



Ensure data integrity with:

- Password-protected user login
- Role-based privileges
- Audit trails

Contact your Agilent representative, or visit
www.agilent.com/chem/sample-scheduler



Sample Scheduler for OpenLab automates the inefficient error-prone steps in your operation, ensuring that the right sample is run on the right instrument using the right methods. Senior staff will appreciate the full lab overview from a desktop or mobile device. Analysts will love the elimination of tedious, redundant data-entry steps and the complete view of their daily workload.

Benefits for lab managers and analysts

- Optimize lab operations from anywhere.
 - Review your entire lab's sample queue and investigate the status of every instrument from a mobile device or desktop PC.
 - Get the fastest possible turnaround time by scheduling priority samples on the next available instrument.
 - Quickly identify and correct instrument issues using clear visual notifications.
 - Onboard new operators and technicians quickly.
- Improve quality.
 - Eliminate errors due to mistakes in manual data entry.
 - Ensure that results are reliably assigned to the correct sample in your LIMS by automating result entry.
 - Be confident that high quality results are transferred to your LIMS by using the optional Review & Submit function.

Benefits for operators and technicians

- View personal workload at a glance.
- Schedule routine maintenance and calibration procedures before the start of the workday.
- Manage and submit samples from a simple interface on a desktop or mobile device.
- Review instrument and sample tray assignments from a mobile device and initiate the run from the same mobile device, all while standing in front of the instrument.
- Quickly identify and fix errors using clear visual notifications.

To learn more about Sample Scheduler for OpenLab, visit: www.agilent.com/chem/sample-scheduler

DE.4262731482

This information is subject to change without notice.

© Agilent Technologies, Inc. 2020
Published in the USA, May 7, 2020
5991-8028EN

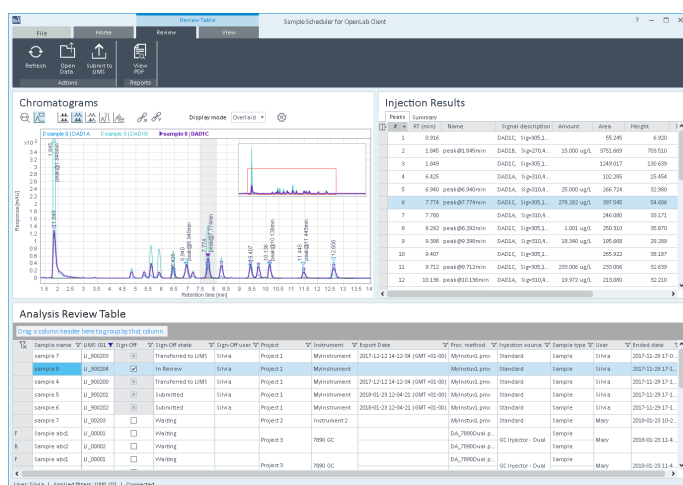


Figure 2. Review results of completed analyses and submit to LIMS if appropriate. Or if needed, open a full interactive OpenLab data analysis session to address processing mistakes (only available on Desktop PC).

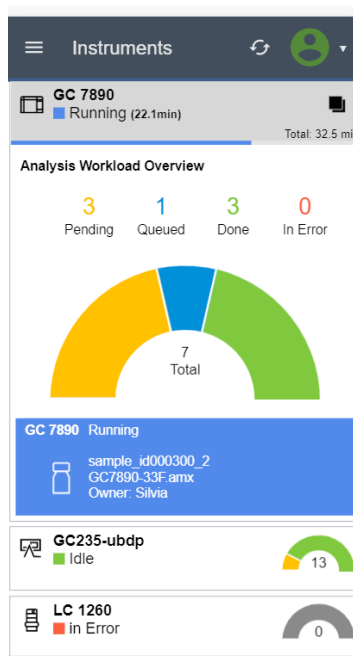


Figure 3. Using a mobile device, review the instrument state and details on how many samples are assigned to each. Click an instrument tile to reveal more, such as name of the running sample, the acquisition method, and the current user in charge of the analysis.