

# Analysis of Linear and Branched Polyethylene Glycols via GPC Viscometry

## Application Note

Materials Testing & Research

### Author

Graham Cleaver  
Agilent Technologies, Inc.

### Introduction

Polyethylene glycol is a biocompatible polymer used in many different commercial products because of its low toxicity. It forms the basis of many cosmetic materials and lubricants. More recently, through its conjugation to different protein and therapeutic materials, it finds use in a variety of biomedical application areas. The biomedical interest in branched type PEG materials has increased as a result of their lower viscosity in comparison with equivalent linear type polymers. Investigation of PEGs by gel permeation chromatography (GPC) can be used to elucidate their relatively compact nature in solution.



## Materials and Methods

Analysis of low molecular weight polyethylene materials is easily achieved by GPC with high efficiency Agilent PLgel 5  $\mu\text{m}$  MIXED-D columns and the Agilent PL-GPC 50 Integrated GPC/SEC System. The PL-GPC 50 was equipped with both differential refractive index and viscometry detection. The PEG samples were prepared at 0.2% (w/v) in dimethylformamide at room temperature for 2 hours and injected without further treatment.

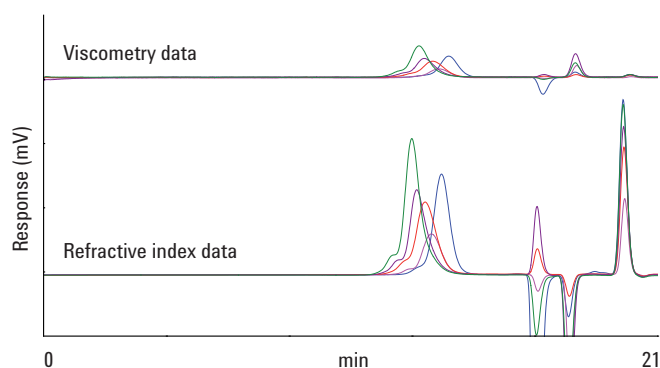


Figure 1. Overlaid raw data chromatograms obtained from a series of linear and branched polyethylene glycol samples

### Conditions

Sample: Polyethylene glycol  
Column: 2 $\times$  PLgel 5  $\mu\text{m}$  MIXED-D, 7.5  $\times$  300 mm (part number PL1110-6504)  
Eluent: Dimethylformamide (+ 0.1% LiBr)  
Flow Rate: 1.0 mL/min  
Inj Vol: 100  $\mu\text{L}$   
Sample Conc: 2.0 mg/mL  
Temp: 50  $^{\circ}\text{C}$   
Calibrants: Agilent EasiVial PEG/PEO  
Detector: PL-GPC 50 (Differential Refractive Index + Agilent PL-BV 400RT Viscometer)

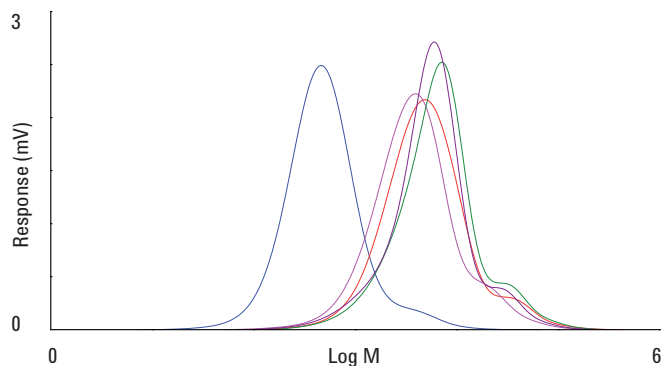


Figure 2. Overlaid raw data chromatograms obtained from a series of linear and branched polyethylene glycol samples

## Results

Figure 1 shows overlaid chromatograms of the samples and Figure 2 the calculated molecular weight distributions.

## Conclusion

This investigation demonstrates how gel permeation chromatography with viscometry detection, delivered by the PL-GPC 50 and PL-BV 400RT, can be used for the analysis of pharmaceutically and commercially interesting materials such as linear and branched polyethylene glycols.

[www.agilent.com/chem](http://www.agilent.com/chem)

This information is subject to change without notice.

© Agilent Technologies, Inc. 2015

Published in USA, April 30, 2015

5991-5825EN



Agilent Technologies