



Agilent 1200 Infinity Series Supplies
Infinitely better

The Measure of Confidence



Agilent Technologies

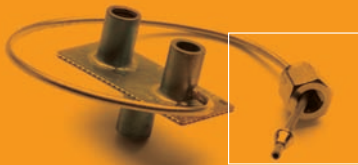


Table of Contents

The new Agilent 1200 Infinity Series is infinitely better. It offers a comprehensive portfolio of LC solutions that give you uncompromised chromatographic performance. Agilent instrument supplies and critical instrument parts are essential for confidence in your results.

Agilent 1200 Infinity Series 3	Detector Supplies 20
LC System Rack 5	Lamps20
Vials..... 6	VWD and DAD Flow Cells.....21
Pump Supplies..... 7	Capillaries for VWD and DAD Flow Cells22
Purge Valves 7	G1362A 1100/1200 Series
Inlet and Outlet Valves 7	Fluorescence Detector (FLD) Supplies23
Pistons and Seals 8	G1362A 1100/1200 Series
Seal Wash 8	Refractive Index Detector (RID) Supplies.....23
Solvent Reservoir & Supplies..... 9	General Supplies..... 24
Solvent Filters 9	G4218A 1200 Series Evaporating
Safety Caps & Supplies10	Light Scattering Detector (ELSD) Supplies24
Replacement Parts11	Capillaries recommended for 1100 and 1200 LC Systems25
Vacuum Degassers11	Stainless steel capillaries recommended for
Sampler Supplies..... 12	1260 Infinity LC and 1200 Rapid Resolution LC systems.....27
Injection Valves.....12	Stainless steel capillaries
Needle and Needle Seat Accessories13	recommended for 1290 Infinity LC systems28
Metering Device Supplies.....14	PEEK Coated Fused Silica Capillaries
Loop Capillaries.....14	for use with 20 µL/min Flow Range.....29
Autosampler Trays15	PEEK Coated Fused Silica Capillaries
Valve Supplies 16	for use with 100 µL/min Flow Range29
Injection Valves.....16	PEEK Coated Fused Silica Capillaries for Nano LC29
Internal Switching Valves.....16	Fittings for 1/16 in. OD Capillaries.....30
External Switching Valve Replacement Parts.....17	Fittings and Ferrules for
Manual Injection Valves with Position Sensing Switches17	Capillary and Nano Flow System31
Manual Injection Valve Sample Loops18	Unions31
Manual Injection Valve Replacement Parts19	HPLC In-Line Filters.....32
Syringes for Manual Injection Valves19	Frits and Adapters32
	Capillary and Fittings Kits.....33
	Accessory Kits37
	LC Columns 38
	Poroshell 12038
	ZORBAX Rapid Resolution High Definition (RRHD)39

Agilent 1200 Infinity Series



Push your UHPLC performance to infinite limits and run your conventional methods with confidence

Whether you need a “workhorse” LC system for routine analysis or the most sophisticated, high-resolution LC/MS system, the Agilent 1200 Infinity Series has what you’re looking for.

Together with critical supplies and replacement parts, our 1200 Infinity Series LC systems deliver ultimate resolution and sensitivity, while helping you boost your separation power per time. They also ensure easy method transferability between systems – without redevelopment or revalidation.

- Try 1.8 μm Rapid Resolution High Definition (RRHD) columns – stable to 1200 bar – for the 1290 Infinity LC.
- Try Eclipse Plus Rapid Resolution High Throughput (RRHT) – stable to 600 bar – for the 1260 Infinity LC.



1220
Infinity LC

1260
Infinity LC

1290
Infinity LC

To order now, visit www.agilent.com/chem/Infinitysupplies

Agilent 1200 Infinity Series



Agilent 1290 Infinity LC: Infinitely more powerful

With the Agilent 1290 Infinity LC, you're no longer limited in your choice of column dimension, particle type, mobile and stationary phase, flow rate, or pressure. That is because the 1290 Infinity LC is the first system that gives you the foundation for method transfer to or from any Agilent or non-Agilent UHPLC or HPLC system. You also get the confidence that comes with:

- **The highest performance by any measure** with features like active damping, microfluidic mixing, and optofluidic waveguides detection technology
- **The highest flexibility** for HPLC, RRLC, and UHPLC
- **UHPLC productivity** with HPLC service costs



Agilent 1260 Infinity LC: Infinitely more confident

Finally – an LC system that meets your demands for chromatographic performance while matching the constraints of your budget. The Agilent 1260 Infinity LC gives you the confidence that comes with:

- **Raising the standard in analytical HPLC** with a 600 bar, high-speed 80Hz detector, and up to 10x greater sensitivity
- **100% compatibility** with HPLC and RRLC
- **RRLC performance** at an HPLC price
- **Ships with a Poroshell 120 column**



Agilent 1220 Infinity LC: Infinitely more affordable

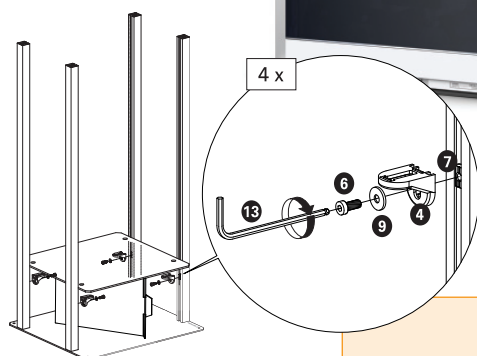
An affordable, high quality solution that maximizes uptime, minimizes maintenance and provides the highest return on your investment. It features:

- **Agilent quality** – Highly affordable price
- **HPLC and RRLC compatibility** – 600-bar and high-speed 80Hz detector
- **Integrated design** – robust and easy-to-use

LC System Rack



Save up to
25% of your
bench space



Part No. 5001-3726

Height 99 cm
Width 48 cm
Depth 43 cm
Weight 27 kg

Reclaim your critical bench space

This stable and robust rack provides an easily assembled answer to the need of more usable bench space. The sturdy and open design also offers you complete protection of your sensitive LC system and easy maintenance for fast, safe access to instruments and cables. It is designed for all Agilent LC module stacks, and features:

- **Easy assembly** that saves you time and expense (See diagram)
- **Adjustable shelves** allowing full customization for all Agilent LC modules
- **Open design** that ensures proper airflow management and power distribution of equipment and cabling

You can also attach Agilent's LC rack to your workbench for maximum stability.

Included with rack:

- 6 Plates
- 4 Rods
- Assembling brackets
- Spacers for all module heights
- Assembling tools and instructions

To order now, visit www.agilent.com/chem/rack

Vials



Vials

Description	Quantity	Part No.
MS Analyzed Vial Kit; includes 2 mL clear screw top vials plus blue screw caps with PTFE/silicone septa	100/pk	5190-2277
MS Analyzed Vial Kit; includes 2 mL clear screw top vials with write-on spots plus blue screw caps with PTFE/silicone septa	100/pk	5190-2278
MS Analyzed Vial Kit; includes 2 mL amber screw top vials plus blue screw caps with PTFE/silicone septa	100/pk	5190-2279
MS Analyzed Vial Kit; includes 2 mL amber screw top vials with write-on spot plus blue screw caps with PTFE/silicone septa	100/pk	5190-2280
Screw top vial, clear silanized, 2 ml	100/pk	5183-2070
Screw top vial, clear silanized with write-on spot, 2 ml	100/pk	5183-2071
Screw top vial, amber silanized with write-on spot, 2 ml	100/pk	5183-2072
Certified screw cap vials, clear	100/pk	5182-0714
Certified 2 mL clear wide opening screw top glass vial, write-on-spot	100/pk	5182-0715
Amber screw top glass vial 2 mL	100/pk	5188-6535
Certified 2 mL amber wide opening screw top glass vial, write-on-spot	100/pk	5182-0716
Certified clear wide opening screw top vial, 2 ml	100/pk	5183-2067
Certified clear screw top vial, write-on spot, 2 ml	1000/pk	5183-2068
Certified amber wide opening screw top vial, 2 ml	1000/pk	5183-2069
Screw top glass vial with fixed insert (300 µL), clear	100/pk	5188-6591
Screw top glass vial with fixed insert (300 µL), amber	100/pk	5188-6592
Certified blue screw caps with integrated septa	100/pk	5182-0717
Certified blue screw caps with integrated septa	500/pk	5185-5820
Certified green screw caps with integrated septa	100/pk	5182-0718
Pre-Assembled, 2 ml Wide Opening Screw Top Glass Vial Convenience Packs		
Clear vials, blue screw caps, PTFE/red silicone septa	100/pk	5182-0553
Clear vials with write-on spot, blue screw caps, PTFE/red silicone septa	100/pk	5182-0864
Amber vials with write-on spot, green screw caps, PTFE/red silicone septa	100/pk	5182-0554
Clear vials, blue screw caps, PTFE/silicone/PTFE septa	100/pk	5182-0555
Polypropylene Crimp/Snap Top Vials		
1 ml	100/pk	5182-0567
300 µL	100/pk	5182-2788
250 µL	1000/pk	9301-0978
100 µL	100/pk	9301-0977

To order now, visit www.agilent.com/chem/vials

Pump Supplies



Purge Valves

Description	Comments	Part No.
Purge valve assembly	For 1260 Infinity LC Iso/Quat/Bin/SFC pumps, includes PTFE frit	G1312-60061
Purge valve assembly	For 1220 Infinity LC pumps, includes PTFE frit	G4280-60061
Purge valve assembly	For 1120 pump, includes PTFE frit	G4280-60031
Purge valve assembly, 400 bar	For 1100/1200 pumps, 1260 Cap and Nano pumps, includes PTFE frit	G1311-60009
Purge valve assembly, 600 bar	For 1200 RRLC pump includes PTFE frit	G1312-60023
5 position/7 port rotor seal	For 1290 Infinity LC purge valve	5068-0005
5 position/7 port stator	For 1290 Infinity LC purge valve	5068-0004
Purge valve actuator	For 1120 pump	G4280-60033
PTFE frits, 5/pk	For 1100/1120/1200/1200 RRLC and 1220/1260/1290 Infinity LC Pumps	01018-22707
Seal for purge valve	For 1120 pump	0905-1192
Gold seal, outlet	For 1100/1200/1200 RRLC, 1120 and 1290 pumps	5001-3707
Outlet caps, 4/pk	For 1100/1200/1200 RRLC and 1120 pumps	5062-2485
Seal cap	For 1260/1220 Infinity LC purge valve G1312-60061/G4280-60061, Compatible with G1311-60009 and G1312-60023 purge valves	5067-4728



Inlet and Outlet Valves

Description	Comments	Part No.
Active Inlet Valve (AIV)		
Active inlet valve, without cartridge	For 1100/1200/1200 RRLC, 1260 Infinity LC Binary/Cap/Nano pumps	G1312-60025
Cartridge for active inlet valve, 400 bar	For 1100/1200, 1260 Infinity LC Cap/Nano pumps	5062-8562
Cartridge for active inlet valve, 600 bar	For 1200 RRLC, 1260 Infinity LC Binary pumps	G1312-60020
Passive Inlet Valve (PIV)		
Passive inlet valve	For 1260 Infinity LC SFC pumps	G1312-60066
Passive inlet valve	For 1260 Infinity LC Iso/Quat pumps, 1120 and 1220 Infinity LC pumps	G4280-60036
Inlet valve	For 1290 Infinity LC	G4220-60022
Valve		
Valve assembly, inlet/outlet	For 1200/1260 Infinity prep pumps	G1361-60012
Outlet Valve		
Outlet valve	For 1260 Infinity LC Cap/Nano/SFC pumps	G1312-60067
Outlet ball valve	For quaternary, isocratic 1100/1200 and 1120 pumps	G1311-60012
	For 1100/1200 binary pumps, 1120 pumps, 400 bar	G1312-60012
	For binary SL pumps, 1260 Infinity LC Iso/Quat/Bin/1220 pumps, 600 bar	G1312-60022
	For 1290 Infinity LC	G4220-60028
Gold seal, outlet	For 1100/1200/1200 RRLC and 1120 pumps	5001-3707
Outlet caps, 4/pk	For 1100/1200/1200 RRLC and 1120 pumps	5062-2485
Sieves for outlet ball valve, 10pk	For G1312-60012 valve	5063-6505
Seal cap	For outlet ball valve 1290 Infinity LC G4220-60028, Compatible with G1311-60012, G1312-60012 and G1312-60022	5067-4728

To order now, visit www.agilent.com/chem/Infinitysupplies

Pump Supplies



Pistons and Seals

Piston Description	Recommended Use	Part No.	Seal Description	Part No.
Sapphire piston	For 1260 Infinity SFC pump	5067-4695	Piston seals, graphite filled PTFE (reversed phase), 2/pk	5063-6589
			Piston seals, polyethylene (normal phase)	0905-1420
	For 1100/1200/1260/1120/1220 pumps	5063-6586	Piston seals, graphite filled PTFE (reversed phase), 2/pk	5063-6589
			Piston seals, polyethylene (normal phase)	0905-1420
Piston SSiC	For 1290 and Infinity LC	5067-4603	Pump seal PE for 1290 Infinity Binary Pump	0905-1719
Sapphire plunger	For 1200 prep pump	G1361-22402	Piston seal for G1361A preparative pump	5022-2188

Seal Wash

Description	Comments	Part No.
Peristaltic pump cassette with silicone tubing	For 1100/1200/1200 RRLC/1260 Infinity LC pumps	5042-8507
Silicone tubing, 1 mm ID, 3 mm OD, 5 m		5065-9978
Peristaltic pump with ChemSure® tubing	For 1100/1200/1200 RRLC/1260 Infinity LC pumps	5065-9952
ChemSure® tubing for peristaltic pump		5042-8954
Wash Seal and Wash Keeper		
Wash seal	For 1100/1200/1200 RRLC, 1120 and 1260/1220 Infinity LC pumps	0905-1175
Seal keeper	For 1100/1200/1200 RRLC and 1120 pumps	5001-3743
Wash seal gasket, 6/pk	For 1100/1200/1200 RRLC/1120/1260 and 1220 Infinity LC pumps	5062-2484
Wash seal PE	For 1260/1220/1290 Infinity LC pump	0905-1718
Support ring	For 1260/1220/1290 Infinity LC pump	G4220-63010
Backup ring for seal holder	For 1260/1220/1290 Infinity LC pump	G4220-24013
Seal keeper	For 1260/1220/1290 Infinity LC pump	G4220-26210
Seal Wash Kits		
Active seal wash kit For 1100/1200 isocratic or quaternary pumps	Includes 2 wash seal gaskets, 2 pump seals, peristaltic pump (includes pump cassette and motor), 2 seal keepers, 2 support ring assemblies, seal insert tool and silicone tubing	G1311-68711
Active seal wash kit For 1100/1200 binary pumps	Includes 4 wash seal gaskets, 4 pump seals, 2 peristaltic pumps (includes pump cassette and motor), 4 seal keepers, 4 support ring assemblies, seal insert tool and silicone tubing	G1312-68711
Continuous seal wash kit For 1100/1200/1200 RRLC pumps	Includes 2 wash seal gaskets, 4 m flex tubing, 2 pump seals, 1 flow regulator, 2 seal keepers, 2 support ring assemblies, 20 mL luer lock syringe, seal insert tool and abrasive paper	01018-68722

Pump Supplies



Solvent Reservoir & Supplies

Description	Part No.
Solvent Reservoir	
Solvent reservoir, 1 L	9301-1420
Solvent reservoir, 1 L with cap	9301-1421
Solvent reservoir, 1 F29/32	9301-0656
Solvent reservoir, amber, 1 L	9301-1450
Solvent bottle, clear, 2 L, 2 inlets	5065-4421
Solvent bottle, amber, 2 L	9301-6341
Solvent bottle, clear, 2 L	9301-6342
Bottle Head Assembly	
Bottle head assembly for screw bottle	G1311-60003
Bottle head assembly for F29/32 tapered solvent bottle	G1312-68716
Bottle head assembly with tubing and filter For capillary and nano systems (with stainless steel solvent filter)	G1376-60003
Bottle head assembly for prep system	G1361-60022
Bottle head assembly for 1290 Infinity LC system	G4220-60007
Bottle cap with 3-hole insert	5063-6531

Solvent Filters



Description	Recommended Use	Part No.	Frit Adapter	Part No.
Glass filter, solvent inlet, 20 µm pore size	Analytical scale, micro scale	5041-2168	Frit adapter, PTFE, 3 mm, 4/pk	5062-8517
Glass filter, solvent inlet, 40 µm pore size	Preparative LC	3150-0944	Frit adapter, PTFE, 4 mm	G1361-23204
	For G2258A Dual Loop autosampler	3150-0944	Frit adapter, PTFE, for 1/8 in. OD tubing	G2258-23201
Solvent inlet filter 12-14 µm SS	For use in capillary and nano systems	01018-60025		



To order now, visit www.agilent.com/chem/Infinitysupplies

Pump Supplies

Safety Caps and Supplies

Description	Comments	Part No.
Safety Cap II with 2 ports – NS29/32	For NS29/32 ground neck bottles Includes: 1 basic cap, PP (blue), NS29/32, with PTFE cone 2 ports, 2 fittings, PFA 3.2 mm (1 blue, 1 red), 1 venting valve with 1 µm PTFE membrane	5043-0221
Safety Cap II with 2 ports – GL45	For GL45 threaded bottles Includes: 1 basic cap, PP (blue), GL45, with PTFE cone 2 ports, 2 fittings, PFA 3.2 mm (1 blue, 1 red), 1 venting valve with 1 µm PTFE membrane	5043-0222
Safety Cap I with 1 port – GL45	For GL45 threaded bottles Includes: 1 basic cap, PP (blue), GL45, with PTFE cone 1 port, 1 fitting, PFA 3.2 mm, (black), 1 venting valve with 1 µm PTFE membrane	5043-0223
Safety Cap II with 2 shut-off valves – GL45	For GL45 threaded bottles Includes: 1 basic cap, PP (blue), GL45, with PTFE cone 2 ports, 2 shut-off valves, 2 fittings, PFA 3.2 mm, (1 blue, 1 red), 2 fittings, PTFE 3.2 mm, (white), 1 venting valve with 1 µm PTFE membrane	5043-0224
Safety Cap I with 1 shut-off valve – GL45	For GL45 threaded bottles Includes: 1 basic cap, PP (blue), GL45, with PTFE cone 1 port, 1 shut-off valve, 1 fitting, PFA 3.2 mm, (black), 1 fitting, PTFE 3.2 mm, (white), 1 venting valve with 1 µm PTFE membrane	5043-0225
5 L waste can GL45	Includes: Safety Cap IV 4 ports 1 leak port – GL45 (5043-0226), 2 ports collector (PTFE) (5043-0235)	5043-0242
10 L waste can S60	Includes: Safety Cap IV 4 ports 1 leak port – GL45 (5043-0227), 2 ports collector (PTFE) (5043-0235)	5043-0243



Pump Supplies



Replacement Parts

Description	Part No.
Fitting for 3.2 mm tube PFA (6/pk)	5043-0255
Fitting for 2.3 mm tube PFA (5/pk)	5043-0228
Fitting for 1.6 mm tube PFA (5/pk)	5043-0229
Charcoal filter (48g)	5043-0230
Screw plug 1/8" (PTFE)	5043-0231
Venting valve with 1 µm PTFE membrane *	5043-0232
Screw plug 1/4" (PTFE) (5/pk)	5043-0233
Thread adapter GL45 – GL40 (PTFE)	5043-0234
2 ports collector (PTFE)	5043-0235
5 L waste can GL45	5043-0236
10 L waste can S60	5043-0237
3 port collector	5043-0238
Adapter for two 3.2 mm tubes	5043-0239

*Valve change is recommended every 6 months

Vacuum Degassers



Description	Comments	Part No.
Tubing kit, degasser to pump, 4/pk, 30 cm pieces of tubing with screws and bushings	For G1322A, G1379A/B	G1322-67300
Mounting tool for flangeless nut	For G1322A, G1379A/B	0100-1710
Plastic tubing cutter	For G1322A, G1379A/B	8710-1930
Tefzel ferrules and SS lock rings, 1/8 in., 10/pk	For G1322A, G1379A/B	5063-6598
PPS nuts, 1/8 in., 1/4-28 thread, 10/pk	For G1322A, G1379A/B	5063-6599
Union, 1/4-28 thread, polypropylene	For G1322A, G1379A/B	5022-2155
PTFE solvent tubing, 5 m, 1.5 mm ID, 3 mm OD	For G1322A, G1379A/B	5062-2483
Disposable syringes, 20 mL, 10/pk	For G1322A	5062-8534
Syringe adapter, 1/16 in. OD, 2 in. long	For G1322A	9301-1337
Dual channel micro degasser vacuum chamber	For G1379A	G1379-60010
Micro vacuum degasser tubing kit for G1379A	For G1379A	G1379-67310
Micro vacuum degasser tubing kit for G1379B	For G1379B	5042-8922
Online degasser accessory kit Includes 8 screws, 8 bushings, 4 markers, tubing, syringe and syringe adapter	For G1322A, G1379A/B	G1322-68705

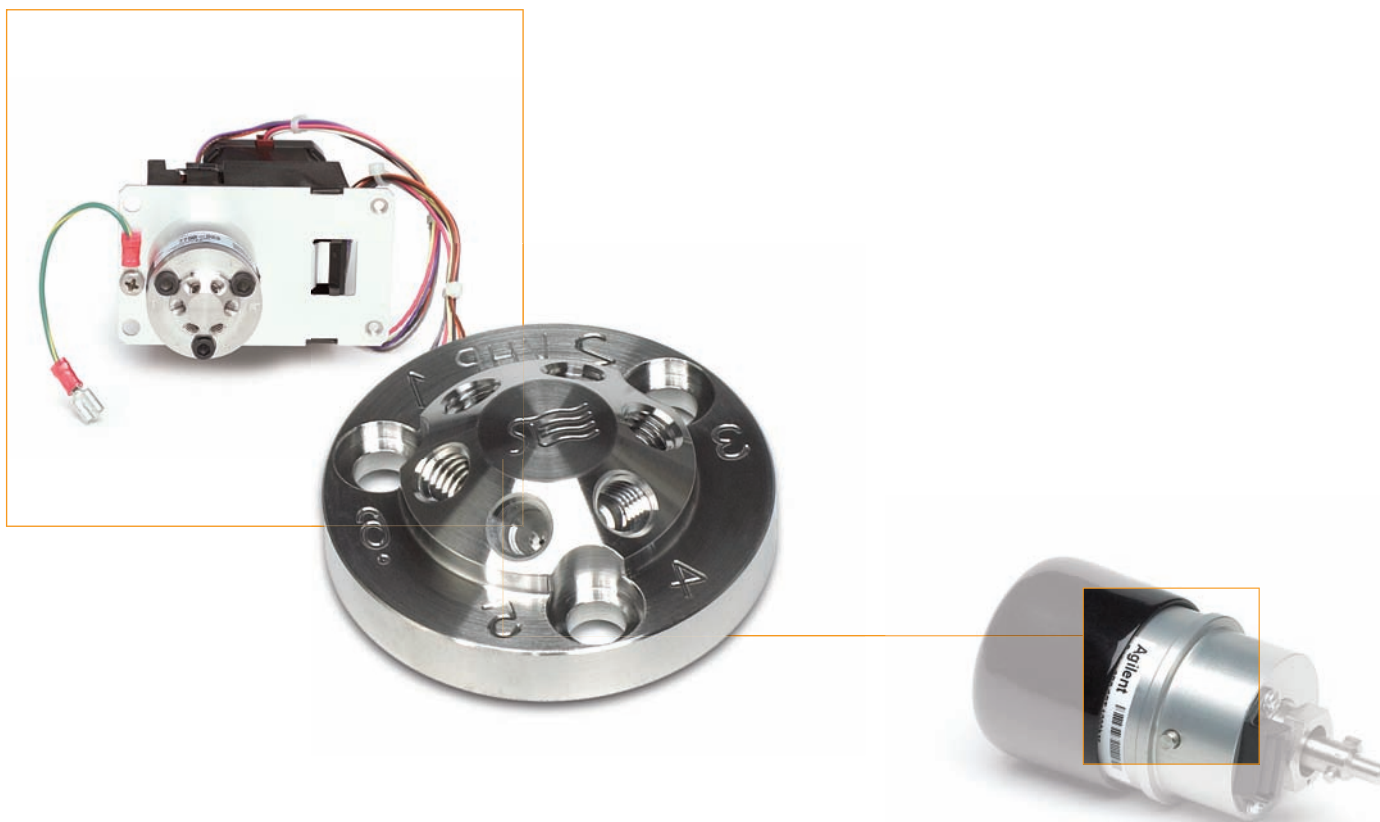
To order now, visit www.agilent.com/chem/Infinitysupplies

Sampler Supplies

Injection Valves

Description	Max Pressure	Use With	Part No.	RheBuild Kit Part No.	Rotor Seal Material	Rotor Seal Part No.	Stator Part No.	Stator Face Part No.
2 position/6 port	400 bar	G1313A, G1329A, 1120, G1367A/B	0101-0921	0101-1257	Vespel	0100-1853	0100-1850	0100-1851
					Tefzel	0100-1849		
					PEEK	0100-2231		
2 position/6 port micro	400 bar	G1377A, G1389A	0101-1050		Vespel	0100-2088	0100-2089	
2 position/6 port	600 bar	G1329B, G1367C SL, G1367D SL Plus, G1367E, 1220	0101-1422		PEEK	0101-1416	0101-1417	
10 port, dual loop valve	400 bar	G2258A	0101-1385		Vespel	0101-2415	0101-1390	
2 position/6 port MBB	400 bar	G2260A	0101-1267	0101-1268	PEEK	0101-1268*	0100-2195	
2 position/6 port ultra high pressure	1200 bar	G4226A	5067-4117		Vespel	5068-0007	5068-0006	

*Includes seal and stator face

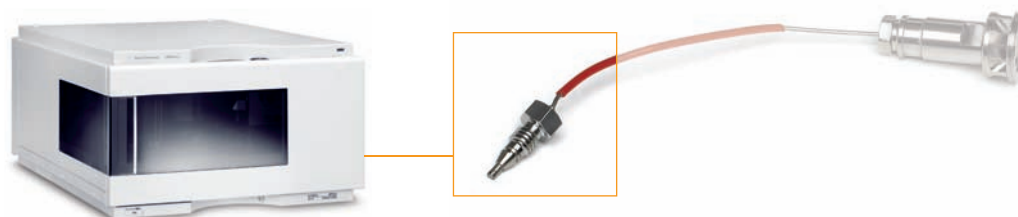


Sampler Supplies



Needle and Needle Seat Accessories

Agilent Autosampler	Needle Assembly Description	Part No.	Compatible with Needle Seat	Part No.
G1313A, G1329A/B, 1120, 1220 Infinity LC (automated sampler only)	Needle assembly, standard autosampler	G1313-87201	Standard needle seat 0.17 mm ID capillary, 2.3 µL	G1313-87101
			Standard needle seat 0.12 mm ID capillary, 1.2 µL	G1313-87103
G1313A, G1329A, 1120, 1220 Infinity LC (automated sampler only)	Needle assembly, for use with PEEK seat	G1313-87203	Standard needle seat, PEEK 0.17 mm ID capillary, 2.3 µL	G1313-87102
	Needle assembly, 900 µL upgrade	G1313-87202	Standard needle seat 0.17 mm ID capillary, 2.3 µL	G1313-87101
G1389A	Needle assembly, micro LC autosampler	G1329-80001	Micro LC needle seat 100 µm ID capillary, 1.2 µL	G1329-87101
			Micro LC needle seat 50 µm ID capillary, 0.3 µL	G1329-87103
G1367A/B	Needle assembly, well plate autosampler (green)	G1367-87200	Needle seat, well plate autosampler 0.17 mm ID capillary, 2.3 µL	G1367-87101
	Needle assembly, well plate autosampler (blue)	G1367-87201	Needle seat, well plate autosampler 0.12 mm ID capillary, 1.2 µL	G1367-87102
G1367C SL and G1367D SL Plus	Needle assembly, well plate autosampler (black)	G1367-87202	Needle seat, 600 bar, with seat capillary, 0.17 mm ID x 100 mm, 0.8 mm OD	G1367-87017
			Needle seat, 600 bar, with seat capillary, 0.12 mm ID x 100 mm, 0.8 mm OD	G1367-87012
G1367E	Needle assembly, 1260-1290 Infinity LC autosampler	G4226-87201	Needle seat, 600 bar, with seat capillary, 0.12 mm ID x 100 mm, 0.8 mm OD	G1367-87012
G1377A	Needle assembly, micro well plate sampler	G1377-87201	Micro needle seat with seat capillary, 100 µm	G1377-87000
			Micro needle seat with seat capillary, 75 µm	G1377-87001
			Micro needle seat with seat capillary, 50 µm	G1377-87002
G2258A	Needle assembly, dual loop autosampler	G2258-68710	Twin needle seat, dual loop autosampler	G2258-87102
G2260A	Needle assembly, prep autosampler	G2260-87201	Needle seat, prep autosampler, 0.5 mm ID, 20 µL	G2260-87101
G4226A	Needle assembly, 1260-1290 Infinity LC autosampler	G4226-87201	Seat assembly, 0.12 mm, 1290 Infinity LC autosampler	G4226-87012



To order now, visit www.agilent.com/chem/Infinitysupplies

Sampler Supplies

Accessories for Needle Assemblies

Description	Use With	Part No.
Seat adapter	G1313A, G1329A, G1389A, G2260A, 1120 and 1220 Infinity LC	G1313-43204
Finger caps, 15/pk	G1313A, G1329A, G1389A, G2260A, 1120 and 1220 Infinity LC	5063-6506
Tool for micro seal capillary mounting	G1377A	G1377-44900



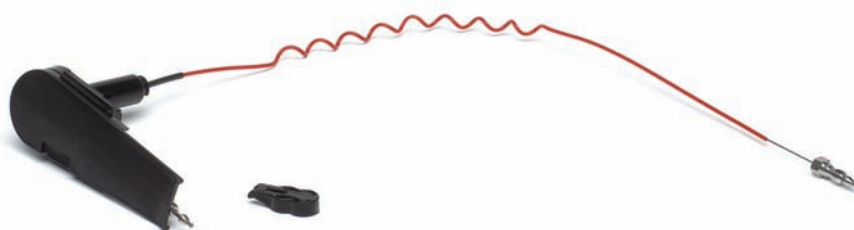
Metering Device Supplies

Piston Description	Use With	Part No.	Seal Description	Part No.
Sapphire piston, 40 µL	G1367D, G1389A, G1377A, G4226A	5064-8293	Piston seal, 2 mm, for G1367D, G1389A, G1377A	5022-2175
			Piston seal for G4226A	0905-1717
Sapphire piston, 100 µL	G1313A, G1329A/B, G1367A/B/C, 1120, 1260/1220 Infinity LC	5063-6586	Piston seals, graphite filled PTFE (reversed phase), 2/pk	5063-6589
Sapphire piston, 900 µL	G1313A, G1329A/B, 1120, 1260/1220 Infinity LC sampler	5062-8587	Metering valve seal	0905-1294
Piston, 5 mL	G2258A	G2258-60003	Piston seal	0905-1599



Loop Capillaries

Description	Agilent Autosampler	Part No.
Stainless steel loop capillary, 100 µL	G1313A, G1329A/B, 1120, 1220 Infinity LC	01078-87302
	G1367A/B/C	G1367-87300
	G1367E	5067-4710
	G4226A	5067-4710
Stainless steel loop capillary, 900 µL	G1329A/B, G2260A	G1313-87303
Loop capillary, 40 µL	G1367D	G1377-87310
	G1367E	5067-4703
	G4226A	5067-4703
	G1377A	G1377-87300
	G1389A	G1329-87302
Loop capillary, 20 µL	G4226A, G1367E	G4226-60310
Loop capillary, 8 µL	G1389A	G1375-87303
	G1377A	G1375-87315
Loop capillary, 5 mL	G2260A	G2260-68711



Sampler Supplies



Autosampler Trays

Description	Comments	Part No.
100 position tray for 2 mL vials	For G1313A, G1329A/B, 1120, 1220 Infinity LC samplers	G1313-44510
100 position tray for 2 mL vials, thermostatable		G1329-60011
40 position tray for 2 mL vials		G1313-44512
15 position tray for 6 mL vials		G1313-44513
External vial tray for 17 vials (disposal position)		G1313-60004
Disposal tube for external vial tray		G1313-27302
Well plate tray, 2 well plates, 10 vials (supports 50 mm plates)	For G1367A/B/C/D/E G2258A, G4226A	G2258-60011
Vial plate for 54 x 2 mL vials, 6/pk		G2255-68700
Vial plate for 15 x 6 mL vials		5022-6539
100 position tray for micro vials	For G1367A/B/C/D/E G4226A	G4226-60021
Tray for 27 Eppendorf safe lock tubes, 0.5/1.5/2 mL	For G1367A/B/C/D/E	5022-6538
8.5 in. well plate rack, 2/pk For 16 shallow well plates, 4 deep well plates (max 48 mm height) or 6 vial racks	For G2257A	G2255-68709
10 in. well plate rack, 2/pk For 20 shallow well plates (max height 16 mm), not compatible with deep well plates	For G2257A	G2255-68710
8.5 in. well plate rack extension Includes 3 racks for 3 x 16 shallow well plates, 2 x 4 deep well plates (max 48 mm height) or 3 x 6 vial racks	For G2257A	G2255-68720
10 in. well plate rack extension Includes 3 racks for 3 x 20 shallow well plates (max height 16 mm), not compatible with deep well plates	For G2257A	G2255-68730
205H rack, two 96 deep well plates	For G2250A	G2250-04504
200 rack, 13 x 100 mm tubes (9 mL), 96		G2250-04503
207 rack, 16 x 100 mm tubes (12 mL), 75		G2250-04502
209 rack, 12 x 32 mm tubes (12 mL), 96		G2250-04501
94A special holding 1100 tray		G2250-04500



To order now, visit www.agilent.com/chem/Infinitysupplies

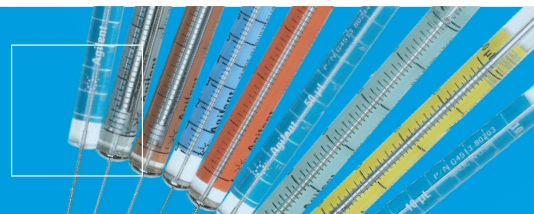
Valve Supplies

Internal Switching Valves

Description	Max Pressure	Use with	Valve complete	Valve Head	Rotor Seal Material	Rotor Seal	Stator Face	Stator Head	Bearing Ring/ Isolation Seal	RheBuild Kit (includes Rotor and Stator)
2 position/6 port	400 bar	G1316A/B	0101-0920		Tefzel	0100-1854	0100-1851	0100-1850	0100-1852	0101-1258
					Vespel	0100-1855				
					PEEK	0100-2233				
2 position/6 port ultra high pressure	1200 bar	G1316C		5067-4117		5068-0008		5068-0006	1535-4045	
2 position/6 port micro	400 bar	G1316A/B	0101-1051			0100-2087	0100-2089			
2 position/6 port high pressure	600 bar	G1316B	0101-1420	5067-4137		0101-1409		0101-1417		
2 position/10 port ultra high pressure	1200 bar	G1316C		5067-4118		5068-0012		5068-0011	1535-4045	
2 position/10 port micro	400 bar	G1316A/B	0101-1343		PEEK	0101-1361		0101-1362		0101-1360
2 position/10 port micro	600 bar	G1316B	0101-1419	5067-4144		0101-1415		0101-1421		
8 position/9 port low pressure	400 bar	G1316C		5067-4108		5067-4113		5067-4112	1535-4045	5067-4113
8 position/9 port high pressure	600 bar	G1316C		5067-4107		5067-4111		5067-4110	0100-1852	
8 position/9 port ultra high pressure	1200 bar	G1316C		5067-4121		5068-0002		5068-0001	1535-4045	



Valve Supplies



External Switching Valve Replacement Parts

Description	Use With	RheBuild Kit Part No.	Rotor Seal Material	Rotor Seal Part No.	Stator Part No.
12 position/13 port preparative solvent selection valve	G1160A	0101-1288			0101-1365
6 position/14 port column selection valve (six column selector)	G1159A	0101-1290			0101-1364
2 position/10 port valve dual-sided MBB	G1157A	0101-1359 0101-1289			0101-1362
2 position/6 port switching valve	G1158A	0101-1358 (with PEEK rotor seal)	Vespel Tefzel PEEK	0100-1855 0100-1854 0100-2233	0100-1850
2 position/6 port switching valve, 600 bar	G1158B		HP PEEK blend	0101-1409	0101-1417
2 position/6 port micro switching valve	G1162A			0100-2087	0100-2089
2 position/10 port micro switching valve	G1163A			0101-1361	0101-1363
6 position/7 port selection valve	G1156A			0101-1361	0101-1410

Manual Injection Valves with Position Sensing Switches

Description	Comments	Part No.	Rotor Seal Material	Rotor Seal Part No.	Stator Part No.	Stator Face Part No.	RheBuild Kit Part No.
7125			Vespel Tefzel PEEK	0101-0623 0101-0620 0101-1255		0101-0624	
7725i, stainless steel	Analytical scale	5063-6502	PEEK	0101-1255	0100-1860	0100-1859	0101-1254
9725i, PEEK	Analytical scale	0101-1253	PEEK	0101-1255			
3725i, stainless steel prep valve	Preparative scale	0101-1232	PEEK	0101-1233			
7010/7000/7040			PEEK	0101-1256			
Manual prep injection valve kit, stainless steel	Includes position sensing, 10 mL loop, 25 mL syringe, ring mounting bracket, start cable and SS connecting capillaries, 0.5 mm ID, 40 cm and 60 cm	5065-9922					
2 position/6 port manual injection valve for 1120	Does not include 20 µL loop and needle port	5067-4104	Vespel	5067-4105	0100-1850		



To order now, visit www.agilent.com/chem/Infinitysupplies

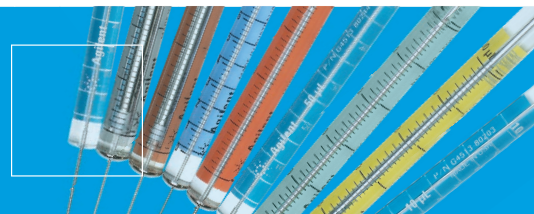
Valve Supplies

Manual Injection Valve Sample Loops



Volume	ID (mm)	Material	Use With	Part No.
5 μ L	0.18	SS	7125 and 7010	1535-4860
	0.18	SS	7725	0101-1248
	0.18	PEEK	9725	0101-1241
10 μ L	0.3	SS	7125 and 7010	0101-0376
	0.3	SS	7725	0100-1923
	0.25	PEEK	9725	0101-1240
20 μ L	0.51	SS	7125 and 7010	0101-0377
	0.3	SS	7725	0100-1922
	0.25	PEEK	9725	0101-1239
50 μ L	0.51	SS	7125 and 7010	0101-0378
	0.51	SS	7725	0100-1924
	0.51	PEEK	9725	0101-1238
100 μ L	0.51	SS	7125 and 7010	0101-0379
	0.51	SS	7725	0100-1921
	0.51	PEEK	9725	0101-1242
200 μ L	0.76	SS	7125 and 7010	0101-1252
	0.76	SS	7725	0101-1247
	0.51	PEEK	9725	0101-1237
500 μ L	0.76	SS	7125 and 7010	0101-1251
	0.76	SS	7725	0101-1246
	0.76	PEEK	9725	0101-1236
1 mL	0.76	SS	7125 and 7010	0101-1219
	0.76	SS	7725	0101-1245
	0.76	PEEK	9725	0101-1235
2 mL	1.00	SS	7125 and 7010	0101-1250
	1.00	SS	7725	0101-1244
	0.76	PEEK	9725	0101-1234
	1.6	PEEK	3725	0101-1229
5 mL	1.00	SS	7125 and 7010	0101-1249
	1.00	SS	7725	0101-1243
	0.76	PEEK	9725	0101-1230
	1.6	PEEK	3725	0101-1228
10 mL	2.00	PEEK	3725	0101-1227
20 mL	2.00	PEEK	3725	0101-1226

Valve Supplies



Manual Injection Valve Replacement Parts

Description	Comments	Part No.
Isolation seal	For Rheodyne Series 7725, 9725, 3725	1535-4046
Ring stand mounting bracket		1400-3166
PEEK adapter, 1/8 in. to 1/16 in.	For 3725i	5067-1503
Position sensor switch for manual valves		0490-1849



Syringes for Manual Injection Valves

Volume (µL)	Description	Needle	Part No.
10	Removable	22/51/3	5190-1485
10	Fixed	22/51/3	5190-1484
25	Removable	22/51/3	5190-1499
25	Fixed	22/51/3	5190-1494
50	Removable	22/51/3	5190-1505
50	Fixed	22/51/3	5190-1501
100	Removable	22/51/3	5190-1512
100	Fixed	22/51/3	5190-1508
250	Removable	22/51/3	5190-1520
250	Fixed	22/51/3	5190-1515
500	Removable	22/51/3	5190-1526
500	Fixed	22/51/3	5190-1522



To order now, visit www.agilent.com/chem/Infinitysupplies



Detector Supplies

Lamps



Description	Comments	Part No.
Variable Wavelength Detector (VWD)		
Long life Deuterium lamp with RFID tag	For G1314D/E/F	G1314-60101
Long life Deuterium lamp	For G1314A/B/C and 1120/1220	G1314-60100
Diode Array Detector (DAD)/ Multiple Wavelength Detector (MWD)		
Long life HiS Deuterium lamp (8-pin) with RFID tag	For G4212A/B	5190-0917
Long life Deuterium lamp with RFID tag	For G1315C/D and G1365C/D	2140-0820
Long life Deuterium lamp	For G1315A/B and G1365A/B	2140-0813
Long life Deuterium lamp without timer	For G1315A/B and G1365A/B	5181-1530
Deuterium lamp	For G1315A/B and G1365A/B	2140-0590
Tungsten lamp	For G1315A/B/C/D and G1365A/B/C/D	G1103-60001



Detector Supplies



VWD and DAD Flow Cells

Description	Use With	Comments	Part No.	Repair Kit Part No.
VWD				
Standard flow cell, RFID	G1314D/E/F	10 mm, 14 μ L, 40 bar	G1314-60186	G1314-65061
Standard "D" type flow cell	G1314A/B/C	10 mm, 14 μ L, 40 bar	G1314-60086	
Semi-micro flow cell, RFID	G1314D/E/F	6 mm, 5 μ L, 40 bar	G1314-60183	G1314-65056
Semi-micro flow cell	G1314A/B/C	6 mm, 5 μ L, 40 bar	G1314-60083	
Micro flow cell, 3 mm, RFID	G1314D/E/F	2 μ L, 120 bar	G1314-60187	G1314-65056
Micro flow cell 3 mm	G1314A/B/C	2 μ L, 120 bar	G1314-60087	
Micro flow cell, 5 mm	G1314A/B/C	1 μ L, 40 bar	G1314-60081	G1314-65052
High pressure flow cell, RFID	G1314D/E/F	10 mm, 14 μ L, 400 bar	G1314-60182	G1314-65054
High pressure flow cell	G1314A/B/C	10 mm, 14 μ L, 400 bar	G1314-60082	
DAD				
Standard flow cell, RFID	G1315C/D, G1365C/D	10 mm, 13 μ L, 120 bar	G1315-60022	G1315-68712
Standard flow cell	G1315A/B, G1365A/B	10 mm, 13 μ L, 120 bar	G1315-60012	
Semi-micro flow cell, RFID	G1315C/D, G1365C/D	6 mm, 5 μ L, 120 bar	G1315-60025	G1315-68713
Semi-micro flow cell	G1315A/B, G1365A/B	6 mm, 5 μ L, 120 bar	G1315-60011	
Micro flow cell, RFID	G1315C/D, G1365C/D	3 mm, 2 μ L, 120 bar	G1315-60024	G1315-68713
Micro high pressure flow cell	G1315A/B, G1365A/B	6 mm, 1.7 μ L, 400 bar	G1315-60015	79883-68700
500 nL flow cell		10 mm, 500 nL, 50 bar	G1315-68724	
80 nL flow cell		6 mm, 80 nL, 50 bar	G1315-68716	
Preparative flow cell	G1315A/B, G1365A/B	3 mm, 120 bar, stainless steel	G1315-60016	G1315-68712
		0.3 mm, 20 bar, quartz	G1315-60017	
		0.06 mm, 20 bar, quartz	G1315-60018	
Max-light cartridge cell	G4212A/B Infinity LC DAD	10 mm, 1.0 μ L, 60 bar	G4212-60008	
Max-light cartridge test cell	Must be used to perform detector build-IN tests	Must be used to perform detector build-IN tests	G4212-60011	
Max-light cartridge cell	G4212A/B	60 mm, 4.0 μ L, 60 bar	G4212-60007	



To order now, visit www.agilent.com/chem/Infinitysupplies



Detector Supplies

Capillaries for VWD and DAD Flow Cells

Use With	Part No.	Inlet Capillary	Part No.	Outlet Capillary	Part No.
VWD					
Standard flow cell, RFID	G1314-60186	Inlet capillary, 600 mm, 0.17 mm ID	5062-8522	Waste capillary, PEEK, 0.25 mm ID	5062-8535
Standard "D" type flow cell	G1314-60086			Fingertight fitting	0100-1516
Semi-micro flow cell, RFID	G1314-60183	Inlet capillary, 400 mm, 0.12 mm ID	5021-1823	Waste capillary, PEEK, 0.25 mm ID	5062-8535
Semi-micro flow cell	G1314-60083			Fingertight fitting	0100-1516
Micro flow cell, 3 mm, RFID	G1314-60187	Inlet capillary, 310 mm, 0.12 mm ID	G1314-87301	Outlet capillary, 120 mm, 0.17 mm ID	G1314-87302
Micro flow cell, 3 mm	G1314-60087				
Micro flow cell, 5 mm	G1314-60081	Inlet capillary, 400 mm, 0.12 mm ID	5021-1823		
High pressure flow cell, RFID	G1314-60182	Inlet capillary, 380 mm, 0.17 mm ID	G1315-87311		
High pressure flow cell	G1314-60082				
DAD					
Standard flow cell with RFID tag	G1315-60022	Inlet capillary with heat exchanger, 0.17 mm ID, 590 mm long	G1315-87321	Outlet capillary, 0.17 mm ID, 200 mm long	G1315-87302
Standard flow cell	G1315-60012				
Semi-micro flow cell with RFID tag	G1315-60025	DAD heat exchanger capillary, 0.17 mm ID, 310 mm long	G1315-87319	Outlet capillary, 0.17 mm ID, 200 mm long	G1315-87302
Semi-micro flow cell with RFID tag	G1315-60011			Outlet capillary, 0.12 mm ID, 200 mm long	G1315-87306
Micro flow cell with RFID tag	G1315-60024	DAD heat exchanger capillary, 0.12 mm ID, 310 mm long	G1315-87339	Outlet capillary, 0.12 mm ID, 200 mm long	G1315-87302
Micro high-pressure flow cell	G1315-60015	Inlet capillary with heat exchanger, 0.12 mm ID, 290 mm long	G1315-87325	Outlet capillary, 0.17 mm ID, 200 mm long	G1315-87306

Detector Supplies



G1321A/B 1100/1200 Series Fluorescence Detector (FLD) Supplies

Description	Part No.
Xenon flash detector lamp	2140-0600
Flow cell	G1321-60005
Cuvette kit, 8 µL, 20 bar Includes tubing, SS fitting, front and back ferrule, PEEK fitting, syringe needle and syringe	G1321-60007
Cut-off Filter Kit	
389, 408, 450, 500, 550 nm	5061-3327
380, 399, 418, 470, 520 nm	5061-3328
280, 295, 305, 335, 345 nm	5061-3329
Corrugated tubing, polypropylene, 6.5 mm ID, 5 m	5062-2463
PTFE tubing, FEP, 0.7 mm ID, 5 m	5062-2462
1/16 in. finger-tight PEEK fittings, beige, 2/pk	0100-1516
Column connecting capillary with fittings, 380 x 0.17 mm	G1315-87311
1/16 in. front ferrule, stainless steel, 10/pk	5180-4108
1/16 in. back ferrule, stainless steel, 10/pk	5180-4114
1/16 in. male fittings, stainless steel, 10/pk	5061-3303
Hex key, 4.0 mm, 10 cm long straight handle	5965-0027
Hex key, 2.5 mm, 10 cm long straight handle	5965-0028
Fluorescence detector calibration sample, 1 g glycogen	5063-6597
Hex key set, 1-5 mm	8710-0641
Open end wrench, 1/4 and 5/16 in.	8710-0510
Glass syringe	9301-1446
Syringe needle	9301-0407

G1362A 1100/1200 Series Refractive Index Detector (RID) Supplies

Description	Part No.
Tubing kit Includes 300 mm recycle valve to recycle port, 200 mm recycle valve to waste port, 120 mm purge valve to recycle valve, 270 mm purge valve to sample cell, 170 mm purge valve to reference cell	G1362-68709
Interface tubing kit Includes 1/8 in. ferrule, 1/3 in. nut, PTFE tubing	G1362-68706
Interface capillary, 400 mm, 0.17 mm ID	G1362-87300
Restriction capillary, 0.17 mm ID	G1362-87301



To order now, visit www.agilent.com/chem/Infinitysupplies



General Supplies



G4218A 1200 Series Evaporating Light Scattering Detector (ELSD) Supplies

Description	Part No.
Standard flow nebulizer	G4218-20000
Semi-micro flow nebulizer	G4218-20001
Large flow nebulizer	G4218-20002
Micro flow nebulizer	G4218-20003
RRLC nebulizer	G4218-20004
Nebulization chamber, glass	G4218-40000
Black plastic nut, 13 mm diameter, glassware	G4218-40010
Black plastic nut, 22 mm diameter, glassware	G4218-40011
Black exhaust tube, 2.5 m	G4218-40110
Bulkhead	G4218-40130
Cartridge, 0.01 µm for gas regulator	G4218-40150
Pneumatic tube with stainless steel fitting	G4218-40220
Drain tube with stainless steel fitting	G4218-40100
Gas regulator with 0.01 µm filter and manometer	G4218-60100
Seal kit for nebulization chamber	G4218-68010
Caffeine standard, 250 µg/mL	G4218-85000



General Supplies



Stainless Steel Capillaries Recommended for 1100 and 1200 Systems

From	To	ID (mm)	Length (mm)	Material*	Color Code	Fittings/Connection	Part No.
Pump	Autosampler	0.17	600	SS	Green	Pre-swaged	G1312-67305
		0.25	130	SS	Blue	Pre-swaged	01090-87308
		0.25	320	SS	Blue	Pre-swaged	79835-87638
		0.17	500	SS	Green	Non-swaged	G1328-87600
	Manual valve	0.17	900	SS	Green	1 end pre-swaged	G1329-87300
	Universal	0.25	700	SS	Blue	1 end pre-swaged	01018-67305
	1 multi assembly	0.6	173	SS		Male to male	G1361-67300
	1 multi assembly	0.6	175	SS		Male to male	G1361-67301
	Restriction capillary			SS		A/A	G1312-67302
	SSV/MCGV	AIV		Pre-swaged	PTFE		Pre-swaged
OBV	Piston 2	0.6	230	SS		Pre-swaged	G1312-67300
Mixing capillary	Damper	0.17	495	SS	Green	Pre-swaged	G1312-67304
Damper	Mixer	0.25	130	SS	Blue	Pre-swaged	01090-87308
Damper	Purge valve			SS		A/A	G1312-67301
Filter	EMPV			SS		A/A	G1375-87400
Needle seat	Injection valve			SS		-C	G1329-87101
EMPV	Next module	0.6	400	SS		Male to male	G1361-67302
EMPV	Multi assembly	0.5	160	SS		Male to male	G1361-67303
Union	EMPV2	0.6	111	SS		Male to female	G1361-67304
Union	Mixer	0.6	40	SS		Male to female	G1361-67305
EMPV1	Union	367	0.6	SS		Male to female	G1361-67306
Autosampler	Column	0.12	180	SS	Red	1 end pre-swaged	G1313-87304
		0.12	280	SS	Red	1 end pre-swaged	01090-87610
		0.12	105	SS	Red	1 end pre-swaged	01090-87611
		0.17	180	SS	Green	1 end pre-swaged	G1313-87305
		0.17	280	SS	Green	1 end pre-swaged	01090-87304
		0.17	800	SS	Green	1 end pre-swaged	01048-87302
		0.17	130	SS	Green	1 end pre-swaged	01090-87305
		0.5	600	SS			G2260-87300

*SS = stainless steel

To order now, visit www.agilent.com/chem/Infinitysupplies



General Supplies

Stainless Steel Capillaries Recommended for 1100 and 1200 Systems

From	To	ID (mm)	Length (mm)	Material*	Color Code	Fittings/Connection	Part No.
Manual valve	Column	0.17	500	SS	Green	Non-swaged	G1328-87600
Column compartment	Column	0.12	70	SS	Red	1 end pre-swaged	G1316-87303
Detector	Waste	0.17	90	SS	Green	Non-swaged	G1316-87300
Column	DAD	0.12	150	SS	Red	Pre-swaged	G1315-87312
		0.17	380	SS	Green	Pre-swaged	G1315-87311
Column	VWD	0.18	40	PEEK	Inlet capillary, 600 mm, 0.17 mm ID	With fittings	5062-8522
		0.12	105	SS	Red	Without fittings	5021-1820
		0.12	150	SS	Red	Without fittings	5021-1821
		0.12	280	SS	Red	Without fittings	5021-1822
		0.12	400	SS	Red	Without fittings	5021-1823
		0.12	70	SS	Red	1 end pre-swaged	G1316-87303
		0.17	105	SS	Green	Without fittings	5021-1816
		0.17	150	SS	Green	Without fittings	5021-1817
		0.17	280	SS	Green	Without fittings	5021-1818
		0.17	400	SS	Green	Without fittings	5021-1819
VWD	Waste	0.25	48	PEEK	Waste capillary, 0.25 mm ID	Without fittings	5062-8535
		0.17	90	SS	Green	With fittings	G1316-87300
Injector valve	Waste	0.25	120	SS	Blue		G1377-87301
Injector valve	Prep head	0.5	160	SS			G2258-87301
Description	ID (mm)	Length (mm)	Material*	Color Code	Fittings/Connection	Part No.	
Stainless steel capillary	0.12	210	SS	Red	Pre-swaged	G1316-87328	
Stainless steel capillary	0.17	250	SS	Green	Pre-swaged	G1367-87304	
Stainless steel capillary	0.12	250	SS	Red	1 end pre-swaged	G1373-87300	

*SS = stainless steel



General Supplies



Stainless Steel Capillaries Recommended for 1260 Infinity LC and 1200 Rapid Resolution LC Systems

From	To	ID (mm)	Length (mm)	Connection	Fittings	Part No.
Pump	Autosampler	0.17	400	Male to male	Pre-swaged	G1312-87303
	Cooled autosampler	0.17	700	Male to male	Pre-swaged	G1312-87304
Damper	Pressure sensor	0.17	150	Male to male	Pre-swaged	G1312-87305
Damper Mixer	Mixer Outlet valve	0.17	105	Male to male	Pre-swaged	G1312-87306
Column	Flow cell	0.17	150	Male to female	Non-swaged	G1315-87303
Cell out	MS	0.12	500	Male to male	1 end pre-swaged	G1315-87307
DAD heat exchanger capillary		0.17	310	Male to male	1 end pre-swaged	G1315-87319
		0.12	310	Male to male	1 end pre-swaged	G1315-87339
Valve	Valve	0.12	100	Male to male	Non-swaged	G1316-27301*
Micro valve	Regeneration pump	0.12	130	Male to female	Non-swaged	G1316-87304*
WPS	Micro valve	0.12	340	Male to male	1 end pre-swaged	G1316-87305*
Micro valve	Heat exchanger	0.12	75	Male to male	Non-swaged	G1316-87306*
TCC VWD	MS	0.12	500	Male to male	1 end pre-swaged	G1316-87309
Column	DAD cell	0.12	50	Male to female	Non-swaged	G1316-87312
		0.12	70	Male to female	Non-swaged	G1316-87313
		0.12	90	Male to female	Non-swaged	G1316-87314
		0.12	130	Male to female	Non-swaged	G1316-87315
		0.17	150	Male to female	Non-swaged	G1315-87303
WPS	TCC	0.12	170	Male to male	Non-swaged	G1316-87316
		0.12	210	Male to male	Non-swaged	G1316-87317
Cooled WPS	TCC	0.12	300	Male to male	Non-swaged	G1316-87318
		0.12	340	Male to male	Non-swaged	G1316-87319
Column	Cooler (50-150 mm column)	0.17	105	Male to male	Non-swaged	G1316-87321
	Cooler (20-30 mm column)	0.17	170	Male to male	Non-swaged	G1316-87323
Micro valve	Detector	0.12	75	Male to female	Non-swaged	G1316-87326*
Column	DAD cell	0.12	170	Male to female	Non-swaged	G1316-87327
WPS	10 port valve	0.12	210	Male to male	Pre-swaged	G1316-87328*
10 port valve	Column	0.12	100	Male to male	Non-swaged	G1367-87303*
WPS	TCC	0.17	250	Male to male	Pre-swaged	G1367-87304

*0.8 mm OD stainless steel capillaries – use 0.8 mm ID fittings

To order now, visit www.agilent.com/chem/Infinitysupplies



General Supplies

Stainless Steel Capillaries Recommended for 1260 Infinity LC and 1200 Rapid Resolution LC Systems (continued)

Description	ID (mm)	Length (mm)	Connection	Fittings	Part No.
DAD heat exchanger capillary	0.17	310	Male to male	1 end pre-swaged	G1315-87319
	0.12	310	Male to male	1 end pre-swaged	G1315-87339
Absorber capillary, 500 µL	0.17	1770	Male to male	Pre-swaged	G1312-87300
Calibration capillary assembly					G1312-67500
Stainless steel restriction capillary, T-piece to pressure sensor	0.17				G1312-87301
Column connecting capillary with fittings	0.17	90	Male to male	Non-swaged	G1316-87300
Flexible capillary	0.17	280		Without fittings	5021-1818
Stainless steel capillary	0.17	230	Male to male	Pre-swaged	5067-1570
Stainless steel capillary	0.17	320	Male to male	Pre-swaged	5067-1571
Stainless steel capillary	0.17	150	Male to female	Pre-swaged	5067-1572

Stainless Steel Capillaries Recommended for 1290 Infinity LC Systems

From	To	ID (mm)	Length (mm)	Fittings	Part No.
Pump	Autosampler	0.17	300	Pre-swaged	5067-4657
Pump	Thermostatted Autosampler	0.17	450	Pre-swaged	5067-4658
Autosampler	TCC	0.12	340	Non-swaged	5067-4659
TCC	DAD	0.12	220	Non-swaged	5067-4660
1290 LC System	CTC Autosampler	0.17	600	Pre-swaged	5067-4670
CTC Autosampler	Column	0.12	600	Non-swaged	5067-4669
Autosampler	Valve	0.12	340	Pre-swaged	5067-4647
Autosampler	Valve	0.12	340	1200 bar removable fitting	5067-4744
Autosampler	Valve (dual stack)	0.12	500	1200 bar removable fitting	5065-4745
Second pump	Valve	0.17	700	Pre-swaged	5067-4648
Valve	HX1-HX2	0.12	90	Pre-swaged	5067-4649
Valve	Heat exchanger	0.12	150	Pre-swaged	5067-4735
Column	Valve (short)	0.12	150	Non-swaged	5067-4650
Column	Valve (short)	0.12	170	Non-swaged	5067-4736
Column	Valve (long)	0.12	280	Non-swaged	5067-4651
Valve	Valve	0.12	120	Pre-swaged	5067-4652
Valve	Valve	0.12	150	Pre-swaged	5067-4737
Valve	Detector	0.12	200	Pre-swaged	5067-4653
Valve	Detector	0.12	200	1200 bar removable fitting	5067-4746
Filter	Purge valve	0.25	250	Pre-swaged	5067-4655
Pressure sensor	Purge valve	0.25	80	Pre-swaged	5067-4656
Mixer	Purge valve	0.17	140	Pre-swaged	G4220-87000
Valve	Metering device	0.17	160	Pre-swaged	G4226-60301

General Supplies



PEEK Coated Fused Silica Capillaries for use with 20 μ L/min Flow Range

From	To	ID (mm)	Length (mm)	Fittings	Part No.
EMPV	Flow sensor	50	220	B/B	G1375-87301
Flow sensor	Injection valve	50	550	B/C	G1375-87310
Injection valve	Metering device	50	200	B/C	G1375-87302
Metering device	Needle	100	110	B/B	G1375-87303
Injection valve	Column	50	500	C/D	G1375-87304
Column	Detector	50	400	D/E	G1315-68703
Detector	Waste	75	700	E/-	G1315-68708
μ -switching valve	Column	50	280	C/D	G1375-87309

PEEK Coated Fused Silica Capillaries for use with 100 μ L/min Flow Range

From	To	ID (mm)	Length (mm)	Fittings	Part No.
EMPV	Flow sensor	100	220	B/B	G1375-87305
Flow sensor	Injection valve	100	550	B/C	G1375-87306
Injection valve	Metering device	100	200	B/C	G1375-87312
Metering device	Needle	100	110	B/B	G1375-87303
Injection valve	Column	75	500	C/D	G1375-87311
Column	Detector	75	400	D/E	G1375-87308
Detector	Waste	75	700	E/-	G1315-68708
μ -switching valve	Column	50	280	C/D	G1375-87309

PEEK Coated Fused Silica Capillaries for Nano LC

From	To	ID (mm)	Length (mm)	Fittings	Part No.
Switching valve	Column	25	100	C/D	G1375-87320
		25	700	C/D	G1375-87324
Switching valve	Column	50	100	C/D	G1375-87325
EMPV	Flow sensor	25	220	B/B	G1375-87321
Flow sensor	Injection valve	25	350	B/C	G1375-87322
Injection valve	Flow sensor	25	550	C/D	G1375-87323
Injection valve	Injector seat or 2nd pump	75	650	C/D	G1375-87327

To order now, visit www.agilent.com/chem/Infinitysupplies

General Supplies



Fittings for 1/16 in. OD Capillaries

Description	Comments	Part No.
1/16 in. stainless steel fitting	Includes nut, front and back ferrules (10/pk)	5062-2418
1/16 in. stainless steel long fitting	Includes nut, front and back ferrules (10/pk)	5065-4454
1/16 in. stainless steel extra long fitting	Includes nut, front and back ferrules (10/pk)	5065-9967
1/16 in. stainless steel fitting	10/pk	5061-3303
1/16 in. stainless steel front ferrule	10/pk	5180-4108
1/16 in. stainless steel back ferrule	10/pk	5180-4114
1/16 in. finger tight PEEK fitting	1 piece, beige (10/pk)	5063-6591
1/16 in. finger tight PEEK fitting	1 piece, beige (2/pk)	0100-1516
1/16 in. finger tight PEEK long fitting	1 piece, beige (10/pk)	5062-8541
1/16 in. finger tight PEEK fitting	1 piece, yellow, blue, black, green, red (10/pk)	5065-4426
1/16 in. double winged PEEK fittings	Includes nut and ferrule (10/pk)	5042-6500
1/16 in. PEEK RheFlex fittings	Includes nut and ferrule (5/pk)	0100-1631
1/16 in. PEEK RheFlex fittings	Includes nut and ferrule, colored (10/pk)	0100-2175
ChromTrac identifiers	2 each: black, green, white; 4 each: yellow, blue, red (20/pk)	0350-1402
1/16 in. stainless steel blanking nut		01080-83202
1/16 in. stainless steel nut, PEEK ferrule	Includes stainless steel nut and PEEK ferrule (6/pk)	5067-1540
1/16 in. PEEK ferrule	For use with 5067-1540 fitting (6/pk)	5067-1547
1/16 in. plastic fitting	Plug	0100-1259
1/16 in. finger tight polyketone fittings	10/pk	5042-8957
1/16 in. 0.8 mm ID stainless steel ferrule	6/pk	5067-1557
1/16 in. 0.8 mm ID stainless steel fitting	M4/4 mm (6/pk)	5067-1558
1/16 in. 1200 bar removable fitting	Up to 1200 bar	5067-4733
1/16 in. 1200 bar removable long fitting	Up to 1200 bar	5067-4738
1/16 in. 1200 bar removable extra long fitting	Up to 1200 bar	5067-4739



General Supplies



Fittings and Ferrules for Capillary and Nano Flow System

Description	Comments	Part No.
1/16 in. stainless steel fittings	Type A - Includes nut, front and back ferrules, (10/pk)	5062-2418
1/16 in. stainless steel nut	Type B - 4 mm (10/pk)	5063-6593
1/32 in. ferrule and stainless steel lock ring	Type B - Use with 5063-6593 nuts (10/pk)	5065-4423
6 fittings, 2 plugs, PEEK for μ -valves	Type C	5065-4410
1/32 in. double winged PEEK fitting	Type D - Includes nut and ferrule (10/pk)	5065-4422
1/32 in. long PEEK fitting	Type D	5022-6536

Unions

Description	Use With	Part No.
True ZDV union, no fittings	Nano LC	5022-2145
Universal ZDV union, stainless steel, no fittings	Capillary/Nano/Standard LC	5022-2184
ZDV union, with fittings	Standard LC	0100-0900
ZDV union, PEEK with fittings	Bio applications	0100-2441
High flow union, no fittings	Prep LC	5022-2133
PEEK adapter 1/4-28 to 10-32		0100-1847
Adapter, PEEK internal 1/4-28 to external 10-32		0100-2298
Barbed Y-Connector PP for 3/16 in. ID tube, 10/pk		5065-9971
Adapter, female to female 1/4-28		5042-8517
Adapter, male luer to female 1/4-28		5042-8518
T-connector, PEEK, swept volume 0.57 μ L	For 1/16 in. OD tubing	5022-2144
Micro T-connector, PEEK, swept volume 29 μ L, with 1/32 in. ID fittings		5042-8519
Adapter, female/male 10-32 to 1/4-28 SST		5023-1803



To order now, visit www.agilent.com/chem/Infinitysupplies

General Supplies

HPLC In-Line Filters

Description	Frit Porosity (µm)	Frit Inlet ID (mm)	Comments	Part No.	Replacement Frits
RRLC in-line filter 4.6 mm, 0.2 µm pore size filter, connecting capillary, max 600 bar	0.2	4.6 max	600 bar	5067-1553	5067-1562, 10/pk
RRLC in-line filter 2.1 mm, 0.2 µm pore size filter, connecting capillary, max 600 bar	0.2	2.1 max	600 bar	5067-1551	5067-1555, 10/pk
Low dispersion in-line filter Includes two frits, 2.1 mm, 2 µm pore size; filter holder with inserts; 60 x 0.12 mm connecting capillary	2	2.1	< 1 mL/min	01090-68702	280959-904, 10/pk
	0.5				280959-907, 10/pk
Universal in-line filter Includes two frits, 4.8 mm, 2 µm pore size; filter holder with inserts; 130 x 0.25 mm connecting capillary	2	4.8	1-5 mL/min	01090-68703	01090-27609, 2/pk
Semi prep filter	0.5	12.7	1-5 mL/min	5064-8273	5022-2185
High pressure semi prep filter	10	19	5-10 mL/min	5022-2165	5022-2166, 10/pk
Prep filter	10		10-100 mL/min	5065-4500	5065-9901 Replacement Glass Cartridge
In-line filter for G1311A	Recommended when high salt concentrations are used			G1311-60006	
1290 in-line filter	0.3	2	1200 bar	5067-4638	5023-0271, 5/pk



Frits and Adapters

Description	Part No.
Solvent mixer, 1100 Series	G1312-87330
Solvent mixer, short, 200 µL	5067-1565
Frit adapter, PTFE, for 4.7 mm OD tubing	G1361-23205
Frit adapter, PTFE, for 1/8 in. OD tubing, For G2258A Dual Loop Autosampler	G2258-23201
O-ring, Viton, 30 mm	0905-1516
Stainless steel filter assembly with PEEK ring, 2 µm pore size	5022-2192



General Supplies



Capillary and Fittings Kits

Description	Contents	Part No.
Capillary/fitting starter kit, 0.12 mm ID	Kit includes: Qty 1 – PEEK capillary, 0.13 mm ID, 1.5 m Qty 4 – Stainless steel capillary, 105 x 0.12 mm Qty 4 – Stainless steel capillary, 150 x 0.12 mm Qty 2 – Stainless steel capillary, 170 x 0.12 mm Qty 2 – Stainless steel capillary, 200 x 0.12 mm Qty 1 – Stainless steel capillary, 220 x 0.12 mm Qty 2 – Stainless steel capillary, 280 x 0.12 mm Qty 1 – Stainless steel capillary, 400 x 0.12 mm Qty 3 – ZDV union, stainless steel Tubing cutter for PEEK capillaries 1/16 in. stainless steel fittings, 10/pk 1/16 in. PEEK fittings, color, 10/pk 1/16 in. PEEK fittings, 10/pk Rheotool Cybertool	5065-9937
Capillary/fitting starter kit, 0.17 mm ID	Kit includes: Qty 1 – PEEK capillary 0.18 mm ID, 1.5 m Qty 4 – Stainless steel capillary, 105 x 0.17 mm Qty 4 – Stainless steel capillary, 150 x 0.17 mm Qty 2 – Stainless steel capillary, 200 x 0.17 mm Qty 2 – Stainless steel capillary, 280 x 0.17 mm Qty 1 – Stainless steel capillary, 400 x 0.17 mm Qty 3 – ZDV union, stainless steel Tubing cutter for PEEK capillaries 1/16 in. stainless steel fittings, 10/pk 1/16 in. PEEK fittings, color, 10/pk 1/16 in. PEEK fittings, 10/pk Rheotool Cybertool	5065-9939
Capillary/fitting starter kit for 1100 Capillary LC System	Kit includes: Qty 2 – Fused silica/PEEK capillary, 50 μ m, 55 cm Qty 1 – Fused silica/PEEK capillary, 50 μ m, 20 cm Qty 1 – Fused silica/PEEK capillary, 100 μ m, 110 cm Qty 2 – Fused silica/PEEK capillary, 50 μ m, 50 cm Qty 2 – Fused silica/PEEK capillary, 50 μ m, 40 cm Qty 4 – 4 mm stainless steel fitting, male 10-32 Qty 4 – 1/32 in. PEEK ferrule and SST lock ring Qty 4 – PEEK fittings for μ -valves Qty 4 – Double winged PEEK nuts and 1/32 in. ferrules Qty 1 – Cybertool	5065-9938

To order now, visit www.agilent.com/chem/Infinitysupplies

General Supplies

Capillary and Fittings Kits (continued)

Description	Contents	Part No.
Rapid Resolution High Throughput capillary kit	Kit includes: Qty 1 – PEEK fitting long for 1/32" OD capillaries Qty 1 – Stainless steel capillary, 280 mm x 0.12 mm Qty 1 – Stainless steel capillary, 150 mm x 0.12 mm Qty 1 – Stainless steel capillary, 70 mm x 0.12 mm Qty 1 – Needle seat capillary, 1.2 µL x 0.12 mm Qty 1 – PEEK capillary, 550 mm x 0.125 mm	5065-9947
1200 capillary kit for 0.12 mm ID	Kit includes: Qty 1 – Stainless steel capillary, 130 mm, 0.12 mm Qty 2 – Stainless steel capillary, 170 mm, 0.12 mm Qty 1 – Stainless steel capillary, 210 mm, 0.12 mm Qty 1 – Stainless steel capillary, 300 mm, 0.12 mm Qty 3 – Stainless steel capillary, 500 mm, 0.12 mm Qty 1 – Stainless steel capillary, 500 mm, 0.12 mm Qty 1 – Stainless steel capillary, 700 mm, 0.12 mm Qty 1 – Stainless steel capillary, 340 mm, 0.12 mm Qty 1 – Low carry over seat Qty 1 – DAD heat exchanger capillary, 310 mm, 0.12 mm	G1316-68716
SS flexible capillary tubing kit	Kit includes: Qty 10 – Stainless steel 1/16" back ferrules Qty 10 – Stainless steel 1/16" front ferrules Qty 10 – Stainless steel fittings Qty 3 – Stainless steel capillary, 105 mm, 0.12 mm Qty 1 – Stainless steel capillary, 150 mm, 0.12 mm Qty 1 – Stainless steel capillary, 280 mm, 0.12 mm	5061-3304
SS flexible capillary tubing kit	Kit includes: Qty 2 – Stainless steel capillary, 35 mm, 0.12 mm Qty 3 – Stainless steel capillary, 105 mm, 0.12 mm Qty 1 – Stainless steel capillary, 280 mm, 0.12 mm	5061-3315
Low dispersion capillary kit	Kit includes: Qty 1 – Stainless steel capillary, 200 mm, 0.12 mm with Swagelok fittings Qty 1 – Stainless steel capillary, 340 mm, 0.12 mm with Swagelok fittings Qty 1 – Stainless steel capillary, 500 mm, 0.12 mm with Swagelok fittings Qty 4 – Stainless steel capillary, 150 mm, 0.12 mm with one 1200 bar removable fitting Qty 1 – Stainless steel capillary, 150 mm, 0.17 mm with Swagelok fittings Qty 4 – Stainless steel capillary, 170 mm, 0.12 mm with one 1200 bar removable fitting Qty 2 – Heat exchanger long-up, 1,6 µL Qty 2 – Heat exchanger long-down, 1,6 µL Qty 2 – Carrier for heat exchanger TCC SL Plus Qty 2 – Fitting holder assembly Qty 1 – Column clip set, eight colors	5067-4729

General Supplies



Capillary and Fittings Kits (continued)

Description	Part No.
Capillary kit 0.17 mm ID for 1290 Infinity TCC 2 position/10 port QuickChange valve	5067-4730
Capillary kit 0.12 mm ID for 1290 Infinity TCC 2 position/6 port QuickChange valve, including low dispersion heat exchangers	5067-4646
Capillary kit 0.12 mm ID for 1290 Infinity TCC 2 position/10 port QuickChange valve, including low dispersion heat exchangers	5067-4682
Capillary kit 0.12 mm ID for 1290 Infinity TCC 6 position/14 port QuickChange valve, including low dispersion heat exchangers	5067-4729
Capillary kit 0.12 mm ID for 1290 Infinity TCC 8 position/9 port QuickChange valve kit (Method Development), for up to 8 short columns, including low dispersion heat exchangers	5067-1595
Capillary kit 0.17 mm ID, G1316C 8/9 vlv Capillary Kit 0.17 mm ID for 1290 Infinity TCC 8 position/9 port QuickChange valve kit (Method Development), for up to 6 long columns	5067-1596
Capillary kit 0.12 mm ID for 1290 Infinity TCC 8 position/9 port QuickChange valve kit (Method Development), for up to 6 long columns, including low dispersion heat exchangers	5067-1597

Visit www.agilent.com/chem for detailed content descriptions

Preventive Maintenance Kits

Description	Comments	Part No.
Pumps		
PM kit for 1260 Infinity LC isocratic or quaternary and 1220 pumps	Includes 1 PTFE pump seal (0905-1503), 1 pack with 5 PTFE frits (01018-22707), 1 seal cap (5067-4728)	G1310-68741
PM kit for 1260 Infinity LC binary pump	Includes 2 PTFE pump seal (0905-1503), 1 pack with 5 PTFE frits (01018-22707), 1 seal cap (5067-4728), 1 pack with 10 sieves for outlet valve (5063-6505)	G1312-68741
PM kit for 1100/1200 isocratic/quaternary pumps	Includes piston seal, PTFE frits, 2 gold seals and 2 outlet caps	G1310-68730
PM kit for 1100/1200 binary pumps	Includes 4 piston seals, PTFE frits, 3 gold seals, 2 sieves and 3 outlet caps	G1312-68730
Extended PM kit For 1100/1200/1200 RRLC pumps	Includes 5063-6589 piston seals (2), 01018-22707 PTFE frits (5/pk), 5062-8562 cartridge active inlet valve, G1311-60012 outlet ball valve and 5063-6586 pistons (2)	5065-4499
PM kit for 1100/1200/1260 Infinity LC capillary pump	Includes 4 pump seals, 4 stainless steel sieves, 4 gold seals, 1 stainless steel frit and 4 outlet caps	G1376-68710
Seal wash PM kit for 1260 Infinity LC pumps	Seal Wash PM kit for 1260 Pumps. Includes 2 PTFE wash seals (0905-1175), 2 gasket wash seal (01018-07102)	G1310-68742
PM kit for 1100/1200/1260 Infinity LC prep pump	Includes 1 filter cup (3150-0942), 4 seal prep flange (5022-2188), 1 filter assy (5022-2192), 1 peristaltic pump 0890-1764 tubing and 4 prep pump seals	G1361-68710
PM kit for manual injector	For 1220 manual injector systems Includes piston seals, PTFE frits, gold seals and rotor seal	G4280-68750
PM kit for automated injector	For 1220 automated injector systems Includes piston seals, PTFE frits, gold seals, rotor seal, needle and needle seat	G4280-68770
PM kit for manual injector	For 1120 manual injector systems Includes piston seals, PTFE frits, gold seals and rotor seal	G4280-68710
PM kit for automated injector	For 1120 automated injector systems Includes piston seals, PTFE frits, gold seals, rotor seal, needle and needle seat	G4280-68730

To order now, visit www.agilent.com/chem/Infinitysupplies

General Supplies



Preventive Maintenance Kits (continued)

Description	Comments	Part No.
Samplers		
PM kit for G1329B samplers	Includes 1 PEEK rotor seal, 1 needle seat, 1 needle	G1313-68719
Standard PM kit for G1313A, G1329A samplers	Includes 1 Vespel rotor seal, 1 needle seat, 1 needle, 2 metering seals and 15 finger caps	G1313-68709
Extended PM kit for G1313A, G1329A samplers	Includes 1 Vespel rotor seal, 1 needle seat, 1 needle, 1 metering seal, 1 stator face	5065-4498
PM kit for G1313A, G1329A samplers	Includes 1 Vespel rotor seal, 1 needle seat, 1 needle	G1313-68730
PM kit for G1367A/B samplers	Includes 1 Vespel rotor seal, 1 needle seat, 1 needle, 1 peristaltic pump cartridge, 1 seal tight nut	G1367-68730
PM kit for G1367E sampler	Includes 1 PEEK rotor seal, 1 needle seat, 1 needle, 1 peristaltic pump cartridge, 1 metering seal	G1367-68741
PM kit for 1220 manual injector	Includes 1 piston seals, 5 PTFE frits and 1 PEEK rotor seal	G4280-68750
PM kit for 1220 automated injector	Includes 1 piston seals, 5 PTFE frits, 1 Vespel rotor seal, 1 needle and 1 needle seat	G4280-68770
PM kit for 1120 manual injector	Includes 1 piston seals, 5 PTFE frits, 2 gold seals, 4 outlet caps and 1 PEEK rotor seal	G4280-68710
PM kit for 1120 automated injector	Includes 1 piston seals, 5 PTFE frits, 2 gold seals, 4 outlet caps, 1 Vespel rotor seal, 1 needle and 1 needle seat	G4280-68730
Detectors		
Cell repair kit	Includes window screw kit, 4 mm hexagonal wrench and seal kit	G1315-68712
Cell repair kit, semi-micro	Includes window screw kit, 4 mm hexagonal wrench and seal kits	G1315-68713
High pressure flow cell kit	Includes 2 windows, 2 Kapton gaskets and 2 PEEK rings	G1314-65054
Standard "D" type flow cell kit	Includes 2 windows, 2 gaskets #1, 2 gaskets #2	G1314-65061

General Supplies



Accessory Kits

Description	Comments	Part No.
PUMPS		
Start-up kits		
Pump start-up kit For 1100/1200/1200 RRLC pumps	Includes 1 outlet cap, 5 PTFE frits, 4 piston seals, 1 outlet gold seal, 2 glass solvent inlet filters, 20 µm, and 1 cartridge for active inlet valve	G1311-68710
Nanoflow LC start-up kit	Includes PEEK coated fused silica capillaries, column and fittings to start-up a Nanoflow LC System	G2228-68700
Accessory kits		
1260 Infinity LC binary pump accessory kit	Includes 1 tubing assembly (5063-6527), 1 CAN cable (5181-1519), 1 RRLC system configurator, 1 SS capillary 0.17 x 400 mm (G1312-87303), 1 SS capillary 0.17 x 700 mm (G1312-87304)	G1312-68755
1100/1200 pump accessory kit	Includes 3 wrenches, 5 PTFE frits, tubing, capillary and wrist strap	G1311-68705
Pump configuration kit for G1312B with G1158B 2 position/6 port valve	Includes side cover with fixed rail, top and right cover for pump housing, plus 6 connecting capillaries. Allows automatic switching between different delay volumes to optimize the system for 2.1 mm ID or 4.6 mm ID columns.	G1312-68726
Capillary pump accessory kit	Includes purge valve and holder, hex keys 2.5, 3 mm, 2 wrenches 1/2 in. x 1/16 in., wrenches 1/4 in. x 5/16 in. and 14 mm, wrist strap, torque adaptor and stainlesssteel frit, 0.5 µm	G1376-68705
Accessory kit prep pump/gradient G1361A	Includes stainless steel connecting capillaries, solvent mixer, 2 L solvent bottle, bottle head assembly, filter, glass stop valve, stainless steel union, tubing and other parts	G1361-68707
Online degasser accessory kit	Includes 8 screws, 8 bushings, 4 markers, tubing, syringe and syringe adapter	G1322-68705
Extended flow range kit, 100 µL/min	Includes all parts to go from 20 µL/min to 100 µL/min flow rate in a capillary LC system	G1376-68707
Manual prep injection valve kit, stainless steel	Includes position sensing, 10 mL loop, 25 mL syringe, ring mounting bracket, start cable and SS connecting capillaries, 0.5 mm ID, 40 cm and 60 cm	5065-9922
SAMPLERS		
Door replacement kits		
Cabinet upgrade kit for 1260 Infinity LC sampler	Includes side panel, top cover and front door	G1329-68736
Door replacement kit for 1260 Infinity LC sampler	Includes front and side doors	G1329-68737
Light protection kit for G1329A	Includes opaque front and side doors and front cover	G1329-68718
Door replacement kit for G1329A	Includes transparent front and side doors	G1329-68727
Upgrade kits		
Multidraw upgrade kit for G1313A/G1327A/G1329A autosamplers	Includes 500 µL capillary, 1500 µL capillary and ZDV union	G1313-68711

To order now, visit www.agilent.com/chem/Infinitysupplies

LC Columns

You don't stop until it's right, neither do we

With over 40 years in the business of manufacturing HPLC columns, Agilent Technologies offers over 2,000 column configurations, providing chromatographers with global scalability and flexibility for method transfers. The silica that goes into Agilent ZORBAX and Poroshell columns is completely manufactured and controlled by Agilent, and the manufacturing process includes stringent quality controls and rigorous testing before the silica is released for use.

Agilent's HPLC columns R&D team works to better meet changing customer needs for improved data quality, compatibility with LC/MS, and higher productivity. Agilent columns R&D efforts have led to breakthroughs such as the unique bonding and endcapping process that enables ZORBAX Eclipse Plus columns to deliver exceptional peak shapes, and the proprietary loading process that allows ZORBAX Rapid Resolution High Definition (RRHD) columns to withstand pressures up to 1200 bar. This team also developed the proprietary single-step coacervation that simplifies the manufacturing process for Poroshell 120, to improve reproducibility. New Poroshell 120 columns provide exceptional efficiency and take performance to a new level with HPLC and UHPLC.



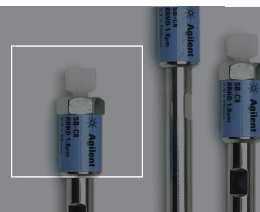
Agilent's newest HPLC Columns give you more power for your method development

Poroshell 120

- Poroshell 120 is a total lab productivity enhancer – improving speed and resolution of separations on conventional HPLC instruments and enabling you to get the most from your UHPLC instruments up to 600 bar.
- Made with a proprietary single-step porous shell process, for improved consistency.
- Poroshell 120 columns feature standard 2 µm frits, so they are more forgiving for dirty samples.
- Poroshell 120 provides easy method transfer for fast results.



LC Columns



Poroshell 120 is Available in a Variety of Phases

Description	Particle Size (µm)	EC-C18	SB-C18	EC-C8
Analytical	4.6 x 150	693975-902	683975-902	693975-906
Analytical	4.6 x 100	695975-902	685975-902	695975-906
Analytical	4.6 x 75	697975-902	687975-902	697975-906
Analytical	4.6 x 50	699975-902	689975-902	699975-906
Analytical	4.6 x 30	691975-902	681975-902	691975-906
Solvent Saver	3.0 x 150	693975-302	683975-302	693975-306
Solvent Saver	3.0 x 100	695975-302	685975-302	695975-306
Solvent Saver	3.0 x 75	697975-302	687975-302	697975-306
Solvent Saver	3.0 x 50	699975-302	689975-302	699975-306
Solvent Saver	3.0 x 30	691975-302	681975-302	691975-306
Narrow Bore	2.1 x 150	693775-902	683775-902	693775-906
Narrow Bore	2.1 x 100	695775-902	685775-902	695775-906
Narrow Bore	2.1 x 75	697775-902	687775-902	697775-906
Narrow Bore	2.1 x 50	699775-902	689775-902	699775-906
Narrow Bore	2.1 x 30	691775-902	681775-902	691775-906



ZORBAX Rapid Resolution High Definition (RRHD)

- ZORBAX RRHD columns are loaded using a special process that enables them to withstand up to 1200 bar pressure. No other sub-2 µm column is rated to work up to 1200 bar.
- RRHD columns have greater stability and longer lifetimes than other UHPLC columns, at higher pressures, which increases reliability.
- Available in a variety of ZORBAX bonded phases – including Eclipse Plus and StableBond – for easy method transfer or method development on sub-2 µm columns.

For a complete list of column part numbers, request your Agilent HPLC Columns Selection Guide (publication number 5990-3534EN) at www.agilent.com/chem

Learn more at www.agilent.com/chem/hplccolumns

Agilent Bond Elut SPE products help ensure accurate, reproducible results right from the start



The Bond Elut difference:

- **Heritage of reliability:** With years of use in some of the most demanding analytical laboratories in the world
- **Options for your needs:** Offering extraction solutions for the widest range of analytes and matrices, and the largest choice of formats and sorbents in the market
- **Innovative products designed for lab efficiency:** Whether it be fast flow polymeric particles or our patented 96-well plate design, all Bond Elut products are created for ease of use and flexibility to meet both manual and automated requirements
- **Technical support at every step:** For your specific applications or to help solve occasional technical issues, a global team of analytical scientists are on hand to assist
- **World class manufacturing and quality:** Unrivaled manufacturing control, plus exacting ISO 9001: 2000 compliant inspections guarantee the consistent quality of Bond Elut

Learn more, visit:

www.agilent.com/chem/samplepreparation

Learn more:

www.agilent.com/chem/infinitysupplies

Buy online:

www.agilent.com/chem/onlinestore

Find an Agilent customer center in your country:

www.agilent.com/chem/contactus

U.S. and Canada:

1-800-227-9770

agilent_inquiries@agilent.com

Europe:

info_agilent@agilent.com

India:

India-lsca_marketing@agilent.com

Asia Pacific:

inquiry_lsca@agilent.com

Or contact your local Agilent Representative or Agilent Authorized Distributor

This information is subject to change without notice.

© Agilent Technologies, Inc. 2010
Printed in the USA November 18, 2010
5990-6511EN



Agilent Technologies