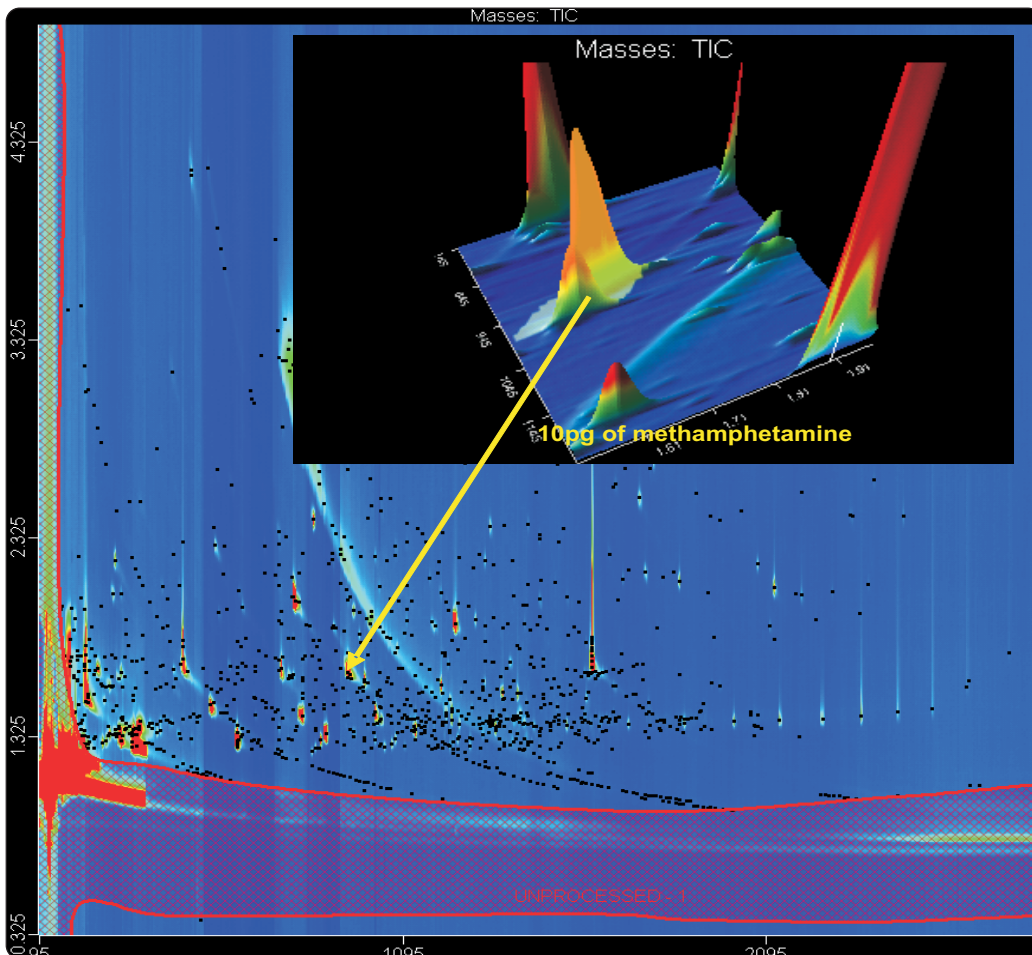


SPME-GCxGC-TOFMS of 10 pg/ μ L Methamphetamine in Urine

Life Science and Chemical Analysis Centre
LECO Corporation, Saint Joseph, Michigan USA



SPME GCxGC-TOFMS analysis of urine spiked with 10pg/ μ L Methamphetamine.

Columns:

30 m x 0.25 mm x 0.25 μ m Rxi-5ms
1.5 m x 0.18 mm x 0.18 μ m Rtx-200

TOFMS:

40 to 650 m/z @ 200 spectra/s

For questions on this analysis
e-mail us at: life_science@leco.com

For a complete listing of snapshots
and application notes visit us on the
web at www.leco.com

