

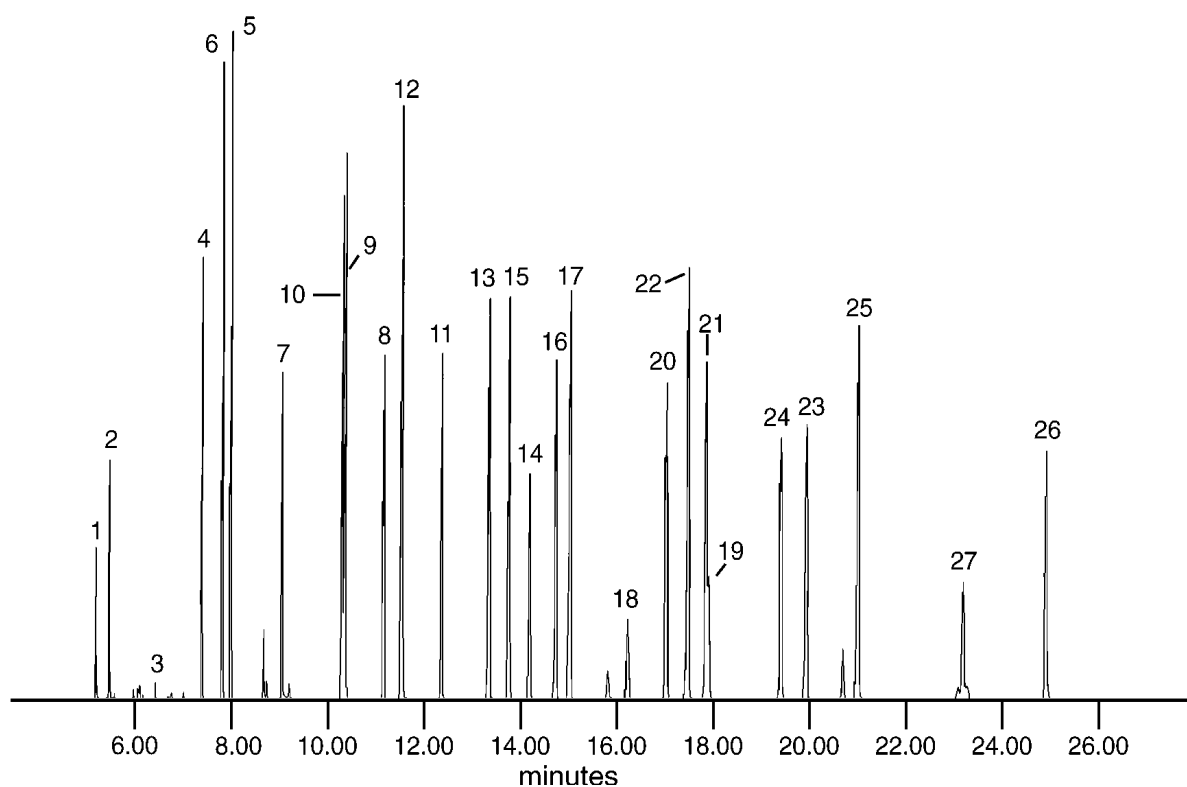
Analysis of commonly used herbicides/pesticides

BPX50

Column part number	054751		
Phase	BPX50	Final temperature	280°C, 5 min
Column	30 m x 0.25 mm x 0.25 µm	Detector	MS
Initial temperature	50°C, 1 min	Injector mode	Splitless, 1 min
Rate 1	70°C/min to 190°C	Carrier gas	He, 20 psi
Rate 2	4°C/min to 280°C	Injection volume	1 µL

Components

- | | | | |
|-----------------------------|--------------------------|-------------------|---------------------|
| 1. Methylidymron decomp. I | 8. Simazine (CAT) | 15. Chlorpyrifos | 22. Flotolanil |
| 2. Methylidymron decomp. II | 9. Diazinon | 16. Pendimethalin | 23. Isoprothiolane |
| 3. Trichlorofon (DEP) | 10. Propyzamide | 17. Isophenphos | 24. Isoxathion |
| 4. Etridiazole | 11. Chlorothalonil (TPN) | 18. Methylidymrom | 25. Mepronil |
| 5. Chloroneb | 12. Terbucarb (MBPMC) | 19. Captan | 26. Pyridaphenthion |
| 6. Benfluralin | 13. Tolclofos | 20. Butamifos | 27. Iprodione |
| 7. Pencycuron | 14. Fenitrothion (MEP) | 21. Napropamide | |


 For more information visit www.trajanscimed.com or contact techsupport@trajanscimed.com