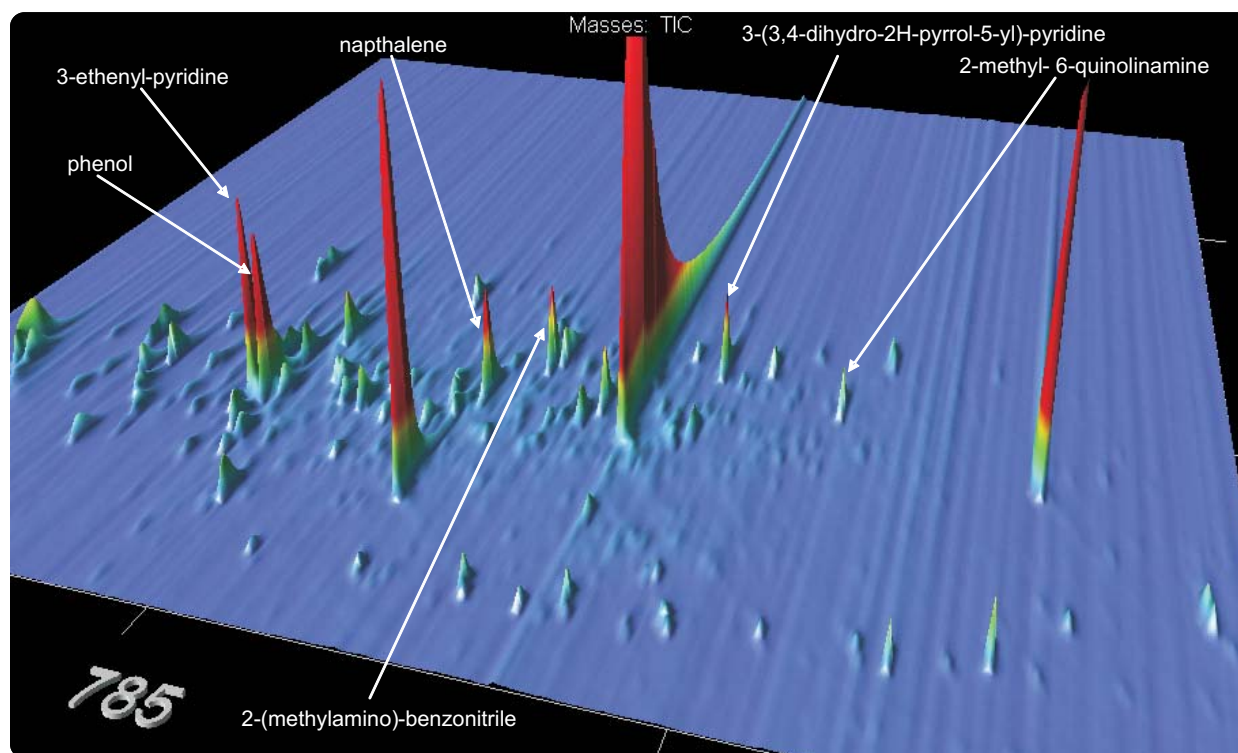


# Analysis of Cigarette Smoke by SPME-GCxGC-TOFMS

Life Science and Chemical Analysis Centre  
LECO Corporation, Saint Joseph, Michigan USA



**A surface plot of a SPME-GCxGC-TOFMS analysis of secondhand cigarette smoke, with some selected peak identifications.**

## Columns:

30 m x 0.25 mm x 0.25  $\mu$ m Rtx-5  
1.4 m x 0.10 mm x 0.10  $\mu$ m DB-17ms

## TOFMS:

45 to 350 m/z @ 200 spectra/s

For questions on this analysis  
e-mail us at: [life\\_science@leco.com](mailto:life_science@leco.com)

For a complete listing of snapshots  
and application notes visit us on the  
web at [www.leco.com](http://www.leco.com)

