

## GC Monitoring of Chlorinated Pesticides in Hazardous Waste Sites

SPB-608 capillary columns were evaluated to demonstrate their suitability for monitoring organochlorine pesticides in hazardous waste samples under US EPA Contract Laboratory Program, March 1990 Statement of Work requirements. All components in the CLP-specified pesticides test mix were baseline resolved, exceeding CLP performance requirements. The combined decomposition of endrin and 4,4'-DDT was 8.86%, easily meeting the inertness requirement that the combined decomposition of these compounds be less than 30%. Linearity was well within CLP specifications; The mean relative standard deviation of the calibration factors was 9.49% and absolute retention times of all the analytes were within the windows established in accordance with the method, establishing linearity well within CLP specifications. (ChromFax: 394003)

### Key Words

- chlorinated pesticides
- hazardous waste
- polychlorinated biphenyls (PCBs)

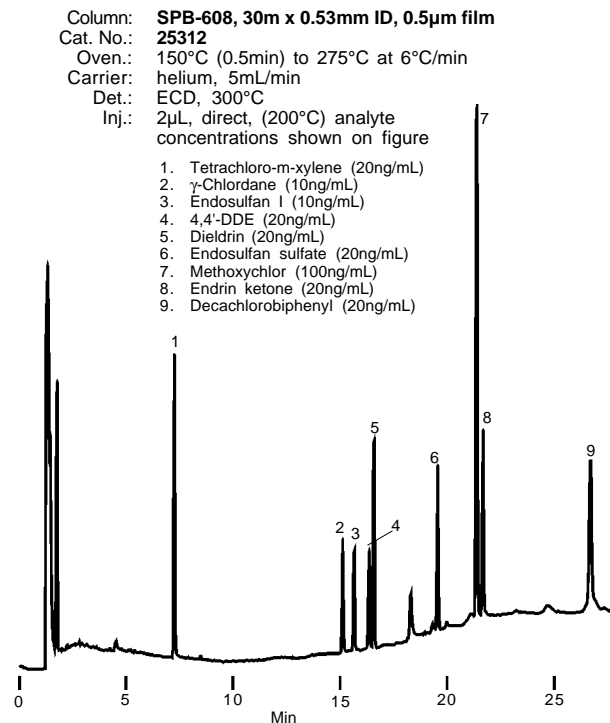
The Contract Laboratory Program (CLP) March 1990 Statement of Work is the most recent gas chromatography procedure published by the US EPA for the monitoring of chlorinated pesticides in samples from abandoned waste sites. This method specifies stringent inertness, resolution, and linearity requirements for the wide-bore (0.53mm ID) capillary GC column.

SPB™-608 capillary columns, which are manufactured and tested specifically for monitoring organochlorine pesticides and PCBs in wastewater according to US EPA Method 608, are also suitable for the CLP method and for the proposed Method 8081 for current waste sites. We evaluated the SPB-608 column using the series of test mixtures specified in the CLP method to measure column resolution and inertness, and system linearity.

Column performance exceeded the CLP method requirement that resolution between consecutive peaks be greater than 60% of the height of the shorter peak. The seven target pesticides in the resolution check mix were baseline resolved, including the pairs of analytes cited in the method as having the poorest resolution on the DB-608 column —  $\gamma$ -chlordane/endosulfan I, 4,4'-DDE/dieldrin, and methoxychlor/endrin ketone (Figure A).

The SPB-608 column easily meets the inertness criteria established in the CLP pesticides method. Decomposition of either endrin or 4,4'-DDT must not exceed 20%, and their combined decomposition must be less than 30%. Endrin decomposition was 8.7%, all in the form of endrin ketone; no measurable amounts of endrin aldehyde were evident. Decomposition of

**Figure A. Baseline Resolution of Target Compounds**



794-0029

4,4'-DDT was measured at 0.16%, in the form of 4,4'-DDE. No measurable amounts of 4,4'-DDD were evident. The combined decomposition of 4,4'-DDT and endrin on this column was 8.86%.

The linearity of the instrument, including the column, is determined by calculating percent relative standard deviation (%RSD) of the calibration factors from a three-point calibration curve for each pesticide and surrogate in individual solutions. The target compounds were analyzed in two standard mixes, A and B, to avoid coelutions. Absolute retention times were determined by calculating the mean retention time from both mixes. Linearity was well within CLP specifications (Table 1).

Absolute retention times of all the target analytes and surrogates in the performance evaluation mixture were within the windows established in the calibration runs for the three concentration ranges (Table 1). The target analytes were baseline resolved (Figure B), well exceeding the CLP requirement that the resolution between adjacent peaks of the individual standard mixes be greater than 90%.

The performance of the SPB-608 column easily meets US EPA requirements for stability, inertness, and linearity as specified in the US EPA CLP Pesticide Method, March 1990 Statement of Work.

**Table 1. SPB-608 Column Easily Meets CLP Retention Time and Linearity Requirements**

Compound	Mean RT (n=3)	Retention Time Window <sup>†</sup>		Calibration Factor <sup>▲</sup> %RSD
		From	To	
Tetrachloro-m-xylene <sup>▼</sup>	7.34	7.29	7.39	8.78
α-BHC	9.43	9.38	9.48	9.90
γ-BHC (Lindane)	10.63	10.58	10.68	6.32
β-BHC	10.92	10.87	10.97	3.28
Heptachlor	11.84	11.79	11.89	2.22
δ-BHC	12.04	11.99	12.09	17.16
Aldrin	12.88	12.83	12.93	14.61
Heptachlor epoxide	14.06	13.99	14.13	9.80
γ-Chlordane	15.17	15.10	15.24	5.84
α-Chlordane	15.65	15.58	15.72	7.17
Endosulfan I	15.69	15.62	15.76	3.33
4,4'-DDE	16.40	16.33	16.47	15.66
Dieldrin	16.61	16.54	16.68	7.13
Endrin	17.65	17.58	17.72	5.00
4,4'-DDD	18.05	17.98	18.12	4.47
Endosulfan II	18.22	18.05	18.29	27.86
4,4'-DDT	18.98	18.91	19.05	6.84
Endrin aldehyde	19.15	19.08	19.22	11.93
Endosulfan sulfate	19.62	19.55	19.69	10.65
Methoxychlor	21.41	21.34	21.48	6.62
Endrin ketone	21.73	21.66	21.80	13.62
Decachlorobiphenyl <sup>▼</sup>	26.76	26.66	26.86	10.52

<sup>†</sup> Retention time windows are ±0.05 minutes for all compounds that elute before heptachlor epoxide; ±0.07 minutes for heptachlor epoxide and other compounds that elute before decachlorobiphenyl; ±0.10 minutes for decachlorobiphenyl.

<sup>▲</sup> %RSD for up to two target compounds, not including surrogates, may be >20%, but must be ≤30.0%. %RSD for remainder of target compounds must be ≤20.0%. %RSD for surrogates must be ≤30.0%.

<sup>▼</sup> Surrogate retention times are measured from standard mix A analysis.

## Ordering Information:

### SPB-608 Fused Silica Capillary Columns

30m x 0.53mm ID, 0.5µm film

**25312**

15m x 0.53mm ID, 0.5µm film

**25310-U**

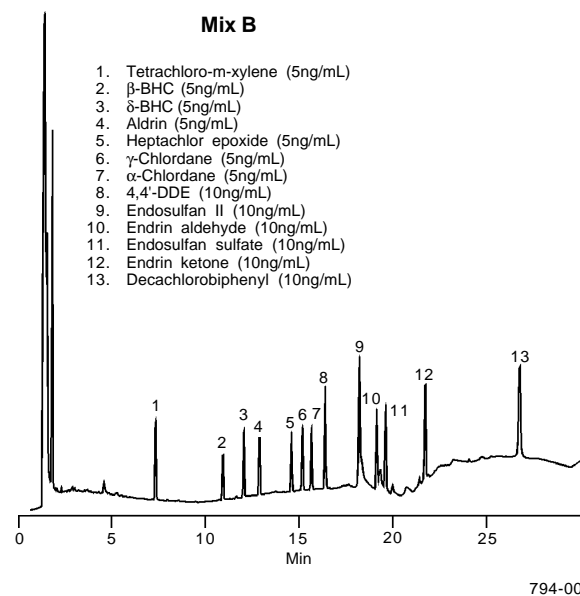
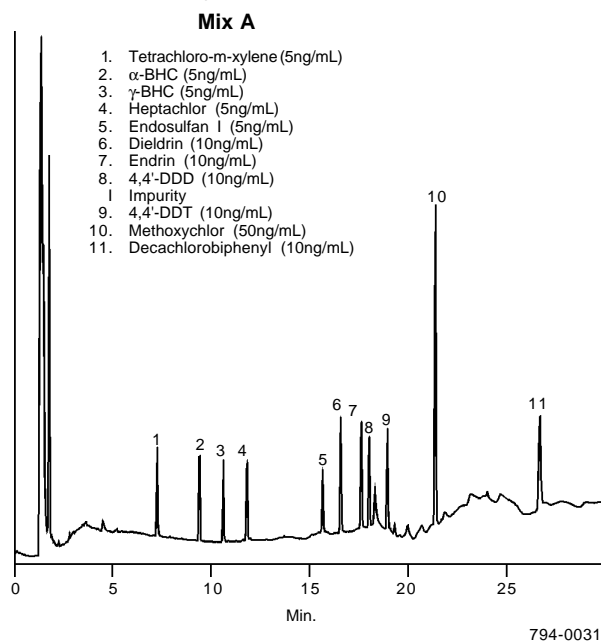
### Reference

US EPA Contract Laboratory Program Statement of Work for Organics Analysis, Multi-Media, Multi-Concentration, Document Number 0LM01.0, Including Revisions 0LM01.1 (December 1990) and 0LM01.1.1 (February 1991).

Fused silica columns manufactured under HP US Pat. No. 4,293,415.

## Figure B. Standard Mixes, Low-Range Concentration

Conditions: Refer to Figure A.



Contact our Technical Service Department (phone 800-359-3041 or 814-359-3041, FAX 814-359-5468) for expert answers to your questions.

Note 3

For more information, or current prices, contact your nearest Supelco subsidiary listed below. To obtain further contact information, visit our website ([www.sigma-aldrich.com](http://www.sigma-aldrich.com)), see the Supelco catalog, or contact Supelco, Bellefonte, PA 16823-0048 USA.

ARGENTINA · Sigma-Aldrich de Argentina, S.A. · Buenos Aires 1119 AUSTRALIA · Sigma-Aldrich Pty. Ltd. · Castle Hill NSW 2154 AUSTRIA · Sigma-Aldrich Handels GmbH · A-1110 Wien  
 BELGIUM · Sigma-Aldrich N.V./S.A. · B-2880 Bornem BRAZIL · Sigma-Aldrich Quimica Brasil Ltda. · 01239-010 São Paulo, SP CANADA · Sigma-Aldrich Canada, Ltd. · 2149 Winston Park Dr., Oakville, ON L6H 6J8  
 CZECH REPUBLIC · Sigma-Aldrich s.r.o. · 186 00 Praha 8 DENMARK · Sigma-Aldrich Denmark A/S · DK-2665 Vallensbaek Strand FINLAND · Sigma-Aldrich Finland/YA-Kemia Oy · FIN-00700 Helsinki  
 FRANCE · Sigma-Aldrich Chimie · 38297 Saint-Quentin-Fallavier Cedex GERMANY · Sigma-Aldrich Chemie GmbH · D-82041 Deisenhofen GREECE · Sigma-Aldrich (o.m.) Ltd. · Ilioupoli 16346, Athens  
 HUNGARY · Sigma-Aldrich Kft. · H-1067 Budapest INDIA · Sigma-Aldrich Co. · Bangalore 560 048 IRELAND · Sigma-Aldrich Ireland Ltd. · Dublin 24 ISRAEL · Sigma Israel Chemicals Ltd. · Rehovot 76100  
 ITALY · Sigma-Aldrich s.r.l. · 20151 Milano JAPAN · Sigma-Aldrich Japan K.K. · Chuo-ku, Tokyo 103 KOREA · Sigma-Aldrich Korea · Seoul MALAYSIA · Sigma-Aldrich (M) Sdn. Bhd. · Selangor  
 MEXICO · Sigma-Aldrich Quimica S.A. de C.V. · 50200 Toluca NETHERLANDS · Sigma-Aldrich Chemie BV · 3330 AA Zwijndrecht NORWAY · Sigma-Aldrich Norway · Torshov · N-0401 Oslo  
 POLAND · Sigma-Aldrich Sp. z o.o. · 61-663 Poznań PORTUGAL · Sigma-Aldrich Quimica, S.A. · Sintra 2710 RUSSIA · Sigma-Aldrich Russia · Moscow 103062 SINGAPORE · Sigma-Aldrich Pte. Ltd.  
 SOUTH AFRICA · Sigma-Aldrich (pty) Ltd. · Jet Park 1459 SPAIN · Sigma-Aldrich Quimica, S.A. · 28100 Alcobendas, Madrid SWEDEN · Sigma-Aldrich Sweden AB · 135 70 Stockholm  
 SVITZERLAND · Supelco · CH-9471 Buchs UNITED KINGDOM · Sigma-Aldrich Company Ltd. · Poole, Dorset BH12 4QH  
 UNITED STATES · Supelco · Supelco Park · Bellefonte, PA 16823-0048 · Phone 800-247-6628 or 814-359-3441 · Fax 800-447-3044 or 814-359-3044 · email: [supelco@sial.com](mailto:supelco@sial.com)

H

Supelco is a member of the Sigma-Aldrich family. Supelco products are sold through Sigma-Aldrich, Inc. Sigma-Aldrich warrants that its products conform to the information contained in this and other Sigma-Aldrich publications. Purchaser must determine the suitability of the product for a particular use. Additional terms and conditions may apply. Please see the reverse side of the invoice or packing slip.