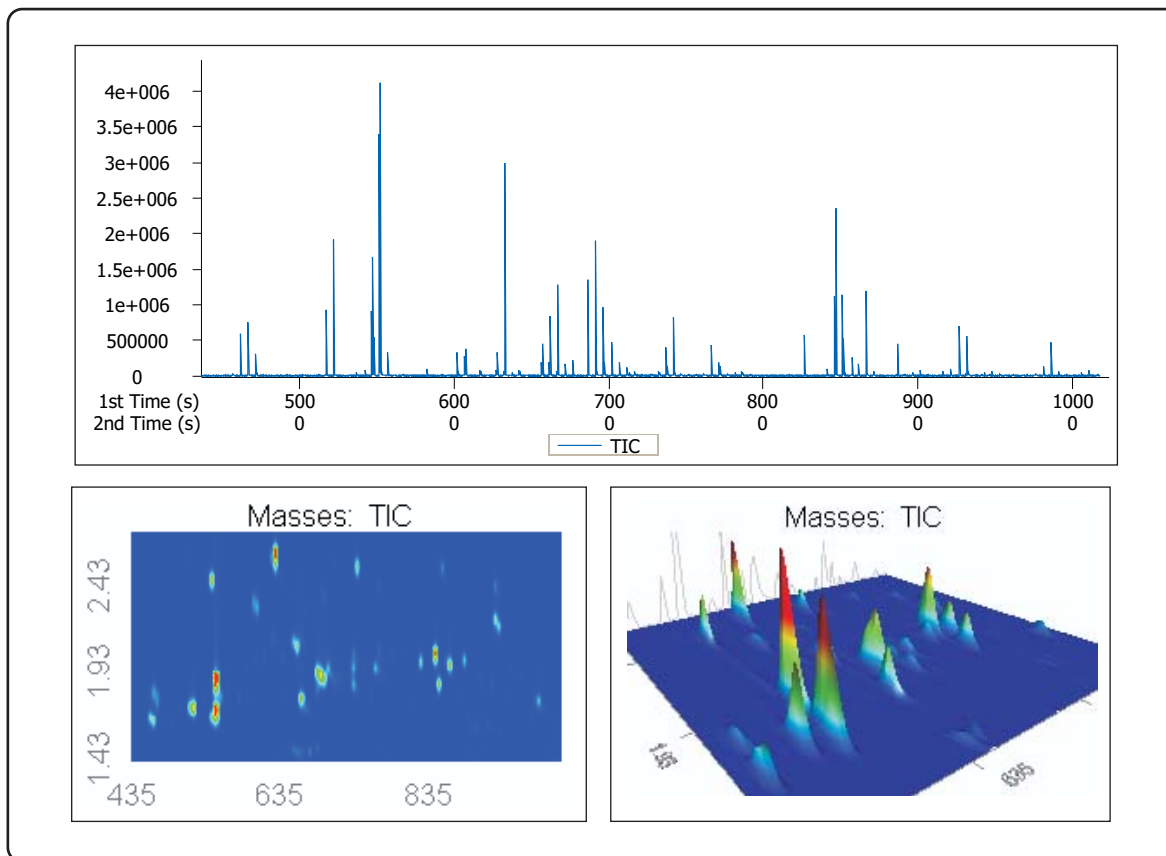


Analysis of Hand Soap by GCxGC-TOFMS

Life Science and Chemical Analysis Centre
LECO Corporation, Saint Joseph, Michigan USA



This injection of Hand Soap was analyzed by GCxGC-TOFMS to highlight the capability of the system to display peaks in the second dimension that would not be visible by conventional gas chromatography.

Columns:

10 m x 0.18mm x 0.2 μ m Rtx-5
1.5 m x 0.10 mm x 0.1 μ m Rtx-17

TOFMS:

29 to 300 m/z @ 100 spectra/s

For questions on this analysis
e-mail us at: life_science@leco.com

For a complete listing of snapshots
and application notes visit us on the
web at www.leco.com

